



The Slip Trail

The Newsletter of New Mexico Potters & Clay Artists | www.nmpotters.org | P.O. Box 26811 Albuquerque, NM 87125

January 2009

New Mexico Potters & Clay Artists

"..to promote excellence and creativity in the clay arts, and to further their understanding and appreciation throughout New Mexico...."

In this issue:

- ◆ Contemporary Clay Fair – Success
- ◆ Letter from the President
- ◆ NCECA 2008 – Pittsburg
- ◆ Letters to the Editor
- ◆ Contemporary Clay Fair Gallery
- ◆ Shows, Announcements
- ◆ Classes, Workshops, Classifieds
- ◆ Bill Armstrong Grant Deadline
- ◆ December Board Meeting Minutes

from the editor.....

This January 2009 issue of The Slip Trail is the first "Green" issue. Of course, from my perspective, they've been "Green" for years, but that's a name thing. We are anxious to see how this process is received. You will be receiving this issue instantly by email and in full color. We want to get your feedback. Please let me or Judy Nelson-Moore know if you have any problems with the email version such as "Message too big" or "Cannot open attachment." Also, Lesley Mausolf has agreed to assume the responsibilities of email management so she will also be in the loop.

We will be printing 150 fewer copies of this 12-page newsletter, saving the consumption of 1800 sheets of paper!! I think that is a very good way to begin this new year, 2009!

Phil Green

Contemporary Clay Fair – Santa Fe 10th Show - A Great Success

by Frank Lux

The Contemporary Clay Fair recently celebrated its 10th show with a Friday night gala showing in addition to the usual Saturday / Sunday event. Even though exhibitors were all a little nervous given the state of the economy, the show went off without a hitch...great weather, lots of customers, lots of sales, lots of membership inquiries and lots of fun spending time with fellow NMPCA members.

As far as overall sales, we had our second-best show, selling more than 800 pieces to nearly 1000 customers.

In reflecting over the last 10 shows, some numbers really shine:

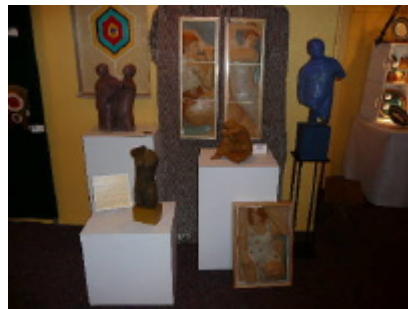
More than 7000 customers in attendance.

More than 6500 pieces of ceramic artwork sold, amounting to almost \$200,000.00.

More than 60 NMPCA members have participated.



Logan Wanamaker's Display



Ruth Weston's Sculpture

I'm not sure how many new members we have gotten because of the show, but Betsy Williams has told me that the CCF is the number one source of new members for the NMPCA. Our name is also traveling far and wide...many customers commented on how they traveled to Santa Fe strictly to come to the show (Roswell, Durango, Grand Junction, Denver!).

I want to send out many hearty thanks to all those who participated and especially to all those who worked so hard both during the show and behind the scenes to continue to make the CCF a great experience for both customers and participants alike. Once again, the hard-working steering committee included: Brenda Jacobs, Linda Kastner, Kathleen Koltres, Cynthia Lux, Barbara Seiler, Sally Stark and Betsy Williams.



Frank & Cindy Lux Display

Thanks again to one and all,

Frank Lux

**Letter from NMPCA President,
Richard Mausolf**

Happy New Year! 2009 is upon us and it looks to be an exciting year for The New Mexico Potters and Clay Artists, starting with this issue of *The Slip Trail*. With so many people and organizations going green, or just doing what they can, we the board of NMPCA felt that we should also do our part. So we are very excited to present our first Green issue of the Slip Trails. I personally find two benefits from this move. The first is that I will now get my Slip Trails so much faster. Last issue was in the mail for three weeks. The second benefit is that like the rest of you we will now get to see each issue in full color. Due to the mail delay I was forwarded a PDF copy of last issue before receiving my hard copy. The hard copy was rather disappointing after seeing it in full color. We have found a down side of going green though, and that is the cost. The cost comes from the higher printing and mailing cost per copy due to the smaller volume. However this is a cost that we felt was worth incurring as the benefits outweigh the costs.

The board is also looking for a few good people to join forces with us. If you are an energetic person and would like to help our organization grow we want to hear from you. While serving on the board of NMPCA does require time, energy and good will, the rewards of meeting new people and helping others make the exchange more than worthwhile. In addition, there are perks to serving on the board, including free membership and studio tour for the duration of your participation. We are currently looking for someone with accounting or bookkeeping experience to fill the treasurer's position when our current treasurer's term ends, or someone who just feels confident they can manage our finances. Board elections will be held in June 2009 at our annual membership meeting. If you would like to join the board, all you need to do is to contact myself, or any other board member.

Here's wishing everyone a happy, safe and prosperous 2009. May your wheels spin smoothly, your slab rollers roll freely and your kilns give you many pleasant surprises.

Richard

We are starting a new year and the outlook is.....well, it is whatever you want to make of it. I choose to see 2009 as a year of remarkable recovery. The economy???.....no, not necessarily, but definitely a year of recovery of values and intentions. We are challenged to think more in order to survive and obligated to live very sensible lives. Creativity in the studio can easily move to the kitchen, the house, the family and the neighborhood. Another surprising result of challenging times is the dramatic increase in public benevolence. Let's hope each of us can be a part of that also.

Phil Green

The Slip Trail

**The newsletter of the New Mexico
Potters & Clay Artists**

Published bi-monthly; submission deadline:
first day of prior month

Richard Mausolf **President**
sws@mountaincomm.us
575-437-6983

Linda Kastner **Vice President**
puppover@zianet.com
505-989-9779

Theresa Pesola **Secretary**
tapesola@unm.edu
505-842-0615

Barbara Seiler **Treasurer**
Pyxart9@aol.com
505-466-4767

Betsy Williams **Membership Manager**
rftgallery@yahoo.com
505-689-1009

Cindy Lux **Board Member**
forbeslux@aol.com
505-466-2121

Nikki Denisson **Board Member**
nden@unm.edu
307-214-9348

Teresa Tunick **Board Member**
tunick@swcp.com
505-986-8912

Kris Thacher **Board Member**
kristhacher@earthlink.net
505-286-6434

Barbara Campbell **Board Member**
bcampbell@valomet.com

Michael Thornton **Board Member**
thesaurusstudio@aol.com
505-344-4644

Judith Nelson-Moore **Webmaster/email editor**
judy@nelsonmoore.com
505-466-3070

Philip Green **Slip Trail Editor**
pjgreen1@comcast.net
505-281-4533

Letters to the Editor.....

Dear Editor,

Thank you for your offer to post "letters to the editor" which enables us to interact with each other in a new way. Your offer reminded me of an issue I have been wanting to "talk" to members about this year.

At NMPCA we sponsor at least one and, in 2008, two non-juried, all-member exhibition opportunities: the Celebration of Clay in Albuquerque and the Celebration of Clay, South in Alamogordo. This is one of the benefits of NMPCA membership.

I have 2 pleas about future NMPCA shows to my fellow members:

1. Please participate in these shows whenever you are able and submit work that is worthy of your best efforts. Your participation helps us build a stronger NMPCA. This is definitely a case of "the more the merrier." The more energy we can generate from these shows, the better we serve our mission: "...to promote excellence and creativity in the clay arts, and to further their understanding and appreciation throughout New Mexico." Many members plan to make something special every year just for these shows. Help us raise the bar even higher from past shows where several award jurors have noted that the quality of the work was very high. We can make it even higher. This has nothing to do with experience in clay...many of our lovely entries have been from beginners, and it is very exciting to see what everyone is doing each year. The nice thing about a non-juried show is that you define what you deem worthy of exhibition...nobody else is defining what you can enter.

It can be very gratifying and exciting to show your work among your peers and to the public. Select your work with the idea that you can be proud standing next to your piece(s) at the opening.

2. Please read carefully and follow the show instructions, submission rules and deadlines. The people who organize, publicize, setup, monitor and takedown these exhibitions are volunteers from your fellow NMPCA members, who don't have any more time available than you do. Some of them don't even have time to submit their own work to the exhibitions, but do the work because they believe in the NMPCA. They set up the arrangements balancing the exhibition space schedule and procedures, publicity guidelines, opening reception arrangements, award juror arrangements, and their own schedules, and still try to make it as easy as possible for you to participate. If you ask for exceptions, are late, early or different, it makes their jobs more difficult than you might imagine just one little request would cause. While this is not a big, juried, commercial, costly show where you would never dream of bending the rules and still expect to participate, you should still treat the

show provisions seriously. Not everyone can assist with the show organizing, but those of us who can't really do help by being extra courteous and following the rules set forth by those who do. We owe them our thanks, and even more, our cooperation.

Judy Nelson-Moore
E-communication coordinator and webmaster
New Mexico Potters and Clay Artists
(505) 466-3070
jnm@nmpotters.org
www.nmpotters.org
www.claystudiotour.com

Dear Slip Trail Editor,

First, congratulations on a consistently high quality publication.



Water Jar by Shoji Hamada

I appreciate you soliciting comments as well as news for each issue and wonder if the attached poem is of any interest to you. If not my feelings will not be hurt. Best wishes for the Holidays.. *Ebby Malmgren 410-849-8778*

Clay has a long memory by Shoji Hamada

In the mountains an ancient village,
a thatched roof cottage.
All day rain has curtained the door.
Toward evening wind rises. Outside
the stir and click of bamboo,
the after-rain chatter of sparrows,
a slow steady drip from the eaves.

The potter's heart is full beating and happy.
His wife has just born him a son.
He hums and leans over his wheel.
Clay rises between his hands:
a straight sided water jar - this jar,
rough textured and Shino glazed -
the one I am holding and want
to buy in this tiny shop in the Ginza.

The stooped owner says if I turn it slowly,
am quiet, attentive, and let my hands follow
the throwing marks of the potter,
I'll hear what the clay remembers.

Studio Potter 1999

National Council on Education in Ceramic Arts: Confluence: Innovation, Community, Environment

Pittsburgh is surprising, starting with the dramatic entrance to the city. You drive through a long, dimly lit tunnel and exit immediately onto a river bridge overlooking numerous downtown skyscrapers (many glass covered - Pittsburgh Glass headquarters is here) shining in the sun directly in front of you! Then you realize you are surrounded by water. Pittsburgh is the confluence of three wide, swift rivers - the Allegheny, the Monongahela and the Ohio and there a record number of bridges – 446! That's 3 more than Venice, Italy. It sits in a valley surrounded by low hills and many of the road intersections are 3-points or 5-points. We enjoyed seeing various parts of the city including The Strip. This is the original warehouse area that for a long time was inhabited by shacks and street people. Today it is an art area with restaurants, a pottery, shops, very old warehouse stores with cheeses, meats, pastas, breads, spices, a wonderful coffee roaster and many varieties of teas. Pittsburgh has gone through some tough times. When the steel mills closed on the 60's, people were out of work and needed retraining.

Pittsburgh has a very large convention center where most of the NCECA events were held. One of my favorites is the K-12 exhibit which showcases students' work from around the country. The next generation of potters is in very good and creative hands. Some of the work we saw was as creative and as well executed as the pottery at the adult exhibitions. These young people have the design skills, patience and technical ability to create amazing vases, busts, plates, teapots and animals. Great credit has to be given to their very talented and dedicated teachers all over the country!

The Regina Brown Cup Sale was held in another room with 974 mugs placed on many tables, all donated by potters attending the conference. They are all sizes and shapes and colors and weights. One was a block of clay with a handle on it and no cavity for liquid that I could see. Others were much lighter, some whimsical, some serious, every style you can think of. The sale started at 8 AM Friday with many eager buyers in a long line. They allowed 20 or 30 eager buyers at a time in to shop. Potters love to buy pottery! Each person was only allowed to buy three cups at a time (you could pay and get back in line if you wanted to). I checked back at noon and there were less than 20 mugs on one lonely table. They

earned \$23,000 in four hours! All the money goes for scholarships. I wonder how we can get that kind of enthusiasm for our Empty Bowls project.

NCECA demonstrates how important and widespread the world of clay is and it is exciting to be in a place where everyone speaks "silica"! Potters come from all over the world - Australia, China, New Zealand, Denmark, France, Belgium were some of the badges I saw and from all over the US. The international Slide Forum featured slides from NMPCA member Marilu Tejero, videos from projects around the world, demonstrations of throwing, altering, carving with a wire, making faces on pots, a 150 lb. bowl.

The trade fair is always interesting, because we get to see the newest tools, glazes (Coyote Clay was there), underglazes, books, magazines, texture tools, the "Cink" - to recycle your clay water, a huge red gas kiln, brushes. Many colleges and clay schools had slides and brochures about their programs. Everyone is interested in answering your questions.

We rented a car and were able to go to many of the more than 100 exhibitions at 60 venues featuring more than 715 artists. There was also a shuttle to take people to see all the work. Standard Clay is the clay maker for the region and they had many exhibits in their huge spaces. Some of the sculptures were displayed on stacked clay boxes. One, "Salt", was carefully arranged interlocking circles on the floor. Another, "Forest", was hanging in a dark and cold room. They also showed us the inside of the huge clay mixer and pug mill and talked about how their clay was made.

A highlight of this year's convention was a bus excursion to Frank Lloyd Wright's amazing 'Fallingwater' and 'Kentuck Knob' home designs about 2 hours southeast of Pittsburgh. Although the day was gray and rainy, the experience of seeing the 'masters' architectural innovations was exciting. Both locations are overseen and maintained by the Western Pennsylvania Conservancy, and the tour rules are prohibitive: No touching, no sitting, no photos, no sketching once the tour begins inside or outside, no, no, NO! Despite the disappointment of not being able to photograph the interior, the two structures offer dramatic creative and imaginative features far ahead of their 1930s designs. Wright designed all of the furnishings, as well, and insisted on their exact placement; not to be disturbed, EVER! (A husband's dream!) Imagine paying the outrageous price of \$155,000 and not being able to move the very furniture you own.

'Kentuck Knob' is owned by a British millionaire and it houses an exquisite collection of pottery made by Lucie Rie, Hans Copper, Bernard Leach, and Shoji Hamada, as well as many very old Southwestern pots. The several acres that surround the property are dotted by huge sculptures and installations, even a large piece of the Berlin Wall.

There are always several hundred exhibits and openings happening, so many that it is difficult to get to see them all. One was in the Carnegie Library and Music Hall, one in an Armory and there were installations and pottery throughout the building.

La Mesa exhibition curated by Avra Leodas attracts many avid collectors every year who can't wait for the opening to see what new treats are waiting there. So many beautiful and delightful place settings. Next to it was "The Orton Cone Box Show" with very surprising delicate and exquisite miniatures which have to fit into a cone box. The next Cone Box Show will be held in 2010.

Skutt Ceramic Products is introducing a new fun competition: "The Peep Show" ..!! "to shamelessly promote their kilns and develop a private collection of the most valuable Peep Hole Plugs on earth for pennies on the dollar" quote from their postcard. Check on www.skutt/peepshow to enter.

Something I look forward to is meeting friends I've made through the years in Clayart and visit them at

the Clayart room, where every year we have a Mug Exchange, meet new potters and enjoy old friendships from all over the world. The highlight of this year was Penne's mug being picked up by Mel Jacobson, and me meeting face-to-face with the legendary Ian Curry, whose teachings I've been applying since 1990 when I started in Australia.

As I reminisce on the stimulating, lectures, forums, demonstrations and networking, the words of the keynote speaker Mr. Bill Strickland, his vision and commitment to improve the lives of his impoverished community will never fade from my memory. How his pottery teacher Frank Ross turned his life for the better and later he went to build one of the best art and pottery studios, the Manchester Craftsman's Guild, a building "good enough for white people", in the worst neighborhood for the poorest children, because every child deserved to learn in well built, clean, beautifully furnished facilities. If you ever go to Pittsburgh, make sure you visit this Center. The pottery studio has twenty one wheels, five huge kilns and a washing machine..!

Now that I have whetted your appetite, here is the best news. NCECA will be in Phoenix next year! A one hour flight or a six hour drive. I'm hoping everyone will be able to have this very educational and fun experience!

Welcome New Members - MEMBERSHIP UPDATE as of December 12, 2008

As we enter the new year, I'll be busy keeping track of all of you. By the time this newsletter is published, each and every one of you will have received a postcard from me. Please read it over, and send it back along with your dues payment (if applicable).

In the meantime, we have a few new members that I'd like to welcome: **Sang Roberson** lives in Taos and in Florida. Sang has set us an example with her career in ceramics, and I'm so happy she's joining. Her e-mail address is sangola@earthlink.net. Also joining is my dear neighbor, **Nausika Richardson** of Dixon, known for her colorful majolica ware, both functional and sculptural. Nausika's e-mail address is nausika@cybermesa.com. And **Jane Webb** joins us from Albuquerque. Many of you probably know Jane's wonderful work. All three of our newest members have expressed interest in the Spring Contemporary Clay Fair, scheduled for April 25 and 26, 2009.

For the first time since we made the transition to the January renewal schedule, we will have one membership fee for the year without any prorated options. No matter when you join, it's \$25 (and still a bargain). Judy Nelson-Moore is generously continuing to offer you the option of a Virtual Studio Tour page for an additional \$15 per year. If you have any questions, contact me or one of the board members (shown in the newsletter). Happy New Year!

Betsy Williams, rftgallery@yahoo.com

Contemporary Clay Fair Gallery



Kathleen Koltes



Mary Sharp Davis



Barbara Seiler



Z Jacobson



Patti Mitchell



Sandra Harrington



Gail Bliss



Maggie Beyeler



Barbara Campbell



Michelle Arterburn



Betsy Williams



Greta Ruiz

Editor's note: I tried to take pictures of each participant's display but I apologize to Greta and Michelle for failing to do so.

MORE CCF Gallery



Gail Bliss



Karin B. Hall



Cheryl Hoagland



Linda Kastner



Sally Stark



Sandy Groves



Phil Green



Kris Thacher



Carol Aronowsky



Pat Marsello



Brenda Jacobs



Elizabeth Rose

Twenty nine artists displayed their work in six-foot spaces at the Santa Fe Women's Club. It was a beautiful overall display and well-received by the community.

Shows and Announcements

Z Jacobson's work now at Santa Fe Pottery



Seasons Greetings!! I wanted to spread the news that my functional work is now carried at Santa Fe Pottery.

They chose a great selection of cups, vases and platters that make fun and whimsical gifts for yourself or others. And.....those much sought after Baby Head

Cups.....they ordered a dozen.

Happy shopping and have a great holiday season!!!!

Z Jacobson

Duncan & Mayco "Gets The Lead Out"!

Note to New Mexico Clay customers about Mayco Lead Bearing and Duncan products: Beginning in January of 2009 Mayco And Duncan will be eliminating all Lead Bearing Products from their glaze lines. Spectrum has done so already.

Why get the lead out now? The writing is on the wall the FDA is reducing lead levels and people are scared, we recommend working with Mayco to re-formulate your favorite can't-live-without product. Duncan has also started down this road and omitted the GL, 200, AR, GO, series glazes from the 2009 Catalog they have plans to be completely lead free by march 1st. If you are presently using a low fire Lead Based Clear (GL612 or one of Mayco's C or CA) call us for a free sample of Pure Brilliance. We have heard that some shops (paint your own) were visited by the Health Dept. (in Connecticut) and the tables and floors had detectable amounts of Lead. The shops were closed and a hazardous waste team had to clean them at great expense. It will be painful, but we can get the lead out.

Craig Donaldson's MFA Thesis Show at UNM



Craig teaches at UNM and Santa Fe Community college, his show at the UNM John Sommers Gallery consisted of piles of "wood" neatly stacked and ready for stoking the

anagama kiln. Only the wood was high fired stoneware clay. Natural variations in the reduction fired pieces served to enhance the realism of the clay sculpture. Craig stated that it

took him 28 years to get his masters, but the experience is well worth it.

"What the Future May Hold" at Santa Fe Clay

"What the Future May Hold: Artists Consider the Post-Bush World"

January 23 through February 21, 2009.

Opening Reception: January 23rd, 6 – 7 pm. At Santa Fe Clay, 1615 Paseo de Peralta.

A few months back, when nearly everyone in this country, if not the world, was a little afraid to wake up on the morning of November 5th, we posed this question to 50 ceramic artists: What does that post-Bush world look like to you? Are you hopeful? Scared? Renewing your passport? Then we asked that they express their speculation or dread or celebration, whatever it was they might be feeling as we rounded this corner into the unknown, in clay.

Some 30 national recognized artists took up the challenge and on January 23rd we will open a month-long exhibition titled What the Future May Hold: Artists Consider the Post-Bush World. The roster of artists who have agreed to participate is impressive and includes many newcomers to Santa Fe Clay like Pavel Amromin, Renee Audette, Jesse Albrecht, Ehren Tool and Nuala Creed, as well as artists we have shown in the past: Joe Bova, Bart Johnson, Misty Gamble, Gena Fowler, Charles Kraft, James Tisdale, Diego Romero and many more. (For a complete list of artists please go to our web site at www.santafeclay.com)

We think "Artists Consider the Post-Bush World" will prove to be a thoughtful, amusing and challenging exhibition and we hope you will join us for an opening reception on Friday, January 23rd from 5 to 7 pm.

Info: Peg Rivard, Gallery Sales Manager

EMAIL: sfc@santafeclay.com
PHONE: (505) 984-1122

Michael Lancaster's "Spindle" in Indiana Show

Michael Lancaster's sculpture "Spindle," was accepted in "Clay & Context" National Juried Exhibition January 15 - Feb 6, 2009 Indiana State University, Sherman Hall, juror.



New Mexico Potters & Clay Artists - Board Meeting Minutes

December 7, 2008 - Santa Fe

Present: Richard Mausolf, Linda Kastner, Barbara Seiler, Teresa Tunick, Kris Thacher, Barbara Campbell, Michael Thornton, Judy Nelson Moore, Phil Green, Leslie Mausolf.

Minutes: Oct. 28, 2008 teleconference meeting minutes were previously approved via e-mail vote.

Treasurer's Report: Approved

Old Business:

1. Thanks to Kris the NMPCA now has a copy of the original articles of incorporation. The name on file is New Mexico Potters' Association, Inc.
2. The Arts Alliance will be in the current location for NMPCA's Celebration of Clay which is scheduled for June 5 through 29, 2009. Kathy Cyman is chairing the COC committee and is working with 2 new committee members.
3. Bill Armstrong Grant. Discussion about getting the word out about the grant. Linda Kastner will contact Daisy to find out what the response has been so far and to write up something for an e-mail reminder.
4. Judy Nelson Moore will be leaving the board this June and has graciously agreed to continue to be the NMPCA web mistress. Much discussion ensued about finding a member to volunteer to take over the e-mail responsibilities. Leslie Mausolf stepped up to the plate and volunteered to do this. Hurray Leslie!
5. Discussion continued about finding a person to take on the duties of treasurer when Barbara Seiler's term is over. Richard will write up something for the slip trail about this. Judy will assist Barbara in getting the books set up in Quicken.
6. There seems to be some confusion as to the dates of board member terms. Richard will ask Tarry to review the minutes to determine the correct dates.
7. Michael T. will organize a meeting of the outreach committee. (Kris T, Cindy L, and Linda K)
8. The Greening of the Slip Trail: The next issue begins the electronic distribution. The responses to the survey are as follows: 125 members requested a green copy, 7 members requested a paper copy and 85 members have not responded. Additional emails will be sent to the 85 members before the slip trail is sent. In order to increase the awareness of the switch to green a "countdown" will begin in both The Slip Trail and email announcements and the 85 non responsive members will receive email and hard copy in the interim.
9. The meeting/teleconference schedule was revised as follows:
 - February 3, 2009 – CC @7:00PM
 - March 29, 2009 – In person
 - May ? – CC
 - June 14, 2009 – ANNUAL MEETING @ Teresa Tunick's
10. The March issue of The Slip Trail needs to advertise the annual meeting.

New Business:

1. There was some discussion about changing the name of NMPCA since our "official" name is still the NMPA. This issue will be held over to another meeting.
2. A motion was made that mid year dues cost should be the full \$25 unless it is December. **Approved.** Student dues will remain at \$10 a year.
3. A motion was made to support Betsy's request to send out a postcard reminding members of their dues and that it is increased to \$25 with a reminder about The Slip Trail going green. **Approved.** The board also discussed offering incentives to those that renew early.
4. Ghost Ranch/Pot Hollow update from Barbara. The Raku area will have a "Haz Mat" clean up this spring to remove the asbestos in the raku car kiln. A Shoulder program in June will be taught by Jim Romberg. August shoulder programs will be taught by Arthur Gonzales, Jim Tanner, and Susan Filley. Costs for these workshops will be \$425, materials fee \$75, and lodging \$100 a night.
5. NMPCA Ghost Ranch Workshop is scheduled for August 28-30, 2009. It will be taught by Mata Ortiz artist Pabla Talavera. Teresa shared with us some literature and stories of her encounters with two groups of Italian ceramicists. One group will be coming to NCECA and offered a presentation in Santa Fe.
6. "From The Ground Up" Sept., 2009. A motion was made to sponsor a \$200 award to this biennial regional juried show. **Approved**

Next Meeting: February 3, 2009 @ 7:00PM via conference call.

Submitted by *Linda Kastner, VP*

Adult Classes – Tuitions are \$230 per seven-week class.

Session 1: January 5 – February 21

HANDBUILDING & SCULPTURE – All level classes

Tuesdays 9:30 am – 12:30 pm Shereen Lobdell

Tuesdays 6:00 – 9:00 pm Lee Atkins

Thursdays 9:30 am – 12:30 pm Edie Tsong

TILE MAKING – All level classes

Mondays 9:30 am – 12:30 pm Maggie Beyeler

EARTHENWARE SURFACES – All level classes

Thursdays 1:00 – 4:00 pm Cami Lien (Lab Fee \$20)

FUNCTIONAL SLAB BUILDING – All level classes

Six-week class – Tuition: \$200

Saturdays 1:00 pm – 4:00 pm Mike Jabbur

WHEEL THROWING – All level classes

Wednesdays 9:30 am – 12:30 pm Michael Prokos

Thursdays 6:00 pm – 9:00 pm Blair Meerfeld

Fridays 9:30 am – 12:30 pm Sean Fairbridge

Session 2: February 23 – April 11

ADVENTURES IN SURFACE DESIGN & GLAZING –

Previous clay experience necessary

Mondays 9:30 am – 12:30 pm Maggie Beyeler (Lab fee \$15)

HANDBUILDING WITH SLABS – All level classes

Tuesdays 9:30 am – 12:30 pm Penny Truitt

HANDBUILDING & SCULPTURE – All level classes

Tuesdays 6:00 pm – 9:00 pm Lee Atkins

Thursdays 9:30 am – 12:30 pm Siddiq Kahn

THROWING & ALTERING – Some throwing experience

necessary - Six-week class – Tuition: \$200

Saturdays 1:00 pm – 4:00 pm Mike Jabbur

WHEEL THROWING – All level classes

Mondays 6:00 pm – 9:00 pm Mike Walsh

Wednesdays 9:30 am – 12:30 pm Michael Prokos

Thursdays 6:00 pm – 9:00 pm Blair Meerfeld

SANTA FE CLAY SAMPLER – All level handbuilding

Fridays 9:30 am – 12:30 pm (One instructor per week)

Lee Atkins, Mike Corney, Cindy Gutierrez, Elizabeth Hunt,
Mike Jabbur, Avra Leodas and Edie Tsong.

Session 3: April 13 – May 30, 2009

HANDBUILDING & SCULPTURE – All level classes

Tuesdays 9:30 am – 12:30 pm Shereen Lobdell

Tuesdays 6:00 – 9:00 pm Lee Atkins

OUTWITTING THE KILN: MODULAR CONSTRUCTION

– All level classes

Mondays 9:30 am – 12:30 pm Penny Truitt

FUNCTIONAL HANDBUILDING – All level classes

Mondays 6:00 pm – 9:00 pm Edie Tsong

WHEEL THROWING – All level classes

Wednesdays 9:30 am – 12:30 pm John Reeve

Wednesdays 6:00 pm – 9:00 pm Mike Walsh

Thursdays 9:30 am – 12:30 pm Jennie Johnsrud

FIGURATIVE SCULPTURE – All levels (Model fee \$25)

Fridays 9:30 am – 12:30 pm Julianne Harvey

Spring Workshops

PORCELAIN ON THE WHEEL: FORM & SURFACE

Saturday & Sunday February 7 & 8 from 9:30 am – 4:30 pm

Lorna Meaden - Tuition \$200, lab fee \$35

PAPER CLAY FOR SCULPTURE

Saturday & Sunday May 2 & 3 from 9:30 am – 4:30 pm

Judy Nelson-Moore - Tuition \$200, lab fee \$35

CONTEMPORARY APPROACHES TO TRADITIONAL
JAPANESE DECORATION

Saturday & Sunday May 16 & 17 from 9:30 am – 4:30 pm

Betsy Williams - Tuition \$200, lab fee \$35

Summer Workshops

Russell Biles June 8 – 12

Shoko Teruyama June 15 – 19

Meredith Brickell June 22 – 26

James Tisdale June 29 – July 3

Sequoia Miller July 6 – 10

Christina West July 13 – 17

Dirk Staschke July 20 – 24

Lynn Smiser Bowers July 27 – 31

William Brouillard August 3 – 7

SunKoo Yuh August 10 - 14

Children & Teen Classes – Tuitions are \$170 per seven-
week session which includes all materials and firings.

Session 1: January 5 – February 21

Session 2: February 23 – April 11

Session 3: April 13 – May 30

CHILDREN'S CLAY CLASSES – Ages 6 – 10 yrs.

Wednesdays 3:30 pm – 5:30 pm Greta Ruiz

TEEN WHEEL CLASS – Ages 10 and up

Mondays 3:30 pm – 5:30 pm Rachel Peck

PARENTS & KIDS TOGETHER – Ages 7 and under with
an adult - Fridays 12:45 pm – 2:45 pm Greta Ruiz

Winter & Spring Workshops for Children & Teens

VALENTINES – Ages 4 & up - Saturday, January 31

10:00 am – 12:00 pm Greta Ruiz

\$55 includes all materials & firings.

EASTER BASKETS – Ages 4 & up - Saturday, March 28

10:00 am – 12:00 pm Greta Ruiz

\$55 includes all materials & firings.

Taos Clay Winter Class Schedule

Wheelthrowing and Handbuilding



Wednesdays 6-8:30 pm

7 Weeks
Logan Wannamaker

\$195

Raku, Naked Raku, Horse Hair-Saggar



please call for time
7 weeks

Pyromaniacs and immediate gratification, lets create!!
Logan Wannamaker

\$205

Open Studio Saturdays



Ongoing Saturdays
10-12:30

Independent instruction for 2 1/2 hours. Access to the studio all day.
John Bradford

\$40/session

Charcoal Firing



Tuesdays 1-4 pm
7 weeks

Fascinating firing process. Results similar to wood fire.

Logan Wannamaker

\$230

Mixing Glazes and Firing Kilns

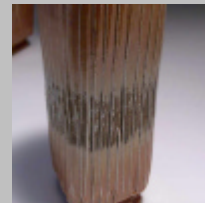


please call for time
5 weeks

Oxidation and reduction. Mix your own glazes. Use gas, electric and raku kiln.

Logan Wannamaker
\$145

Surface Decoration and Custom Tile Making



please call for time
7 weeks

Learn to redo your splash guards with custom artwork.

Matt Adams - \$195

**Logan Wanamaker – 505-758-9884 – 770-4334
potmaker@gmail.com**

Important Announcement - Bill Armstrong Grant Proposals Due February 1

This is to remind members that applications for the Bill Armstrong Grant are due by Feb. 1. Detailed instructions are available on the website www.nmpotters.org with link to "grant". The annual grant supports organizations and projects which further education and experiences in clay arts and can pay up to \$1000.

All applications are reviewed by a committee, and the final decision on the award is made by the Board.

Please send proposals to
Daisy Kates, PO Box 661, Placitas, NM, 87043,

or to the NMPCA address listed on the website. Questions can be directed to Daisy at 867-3790 or daisyklay@yahoo.com.

Classifieds

Studio Space Available to Rent

East Mountains East of Sandia Park about 6 miles, near Mountain Valley Road and Frost Road.

This is new building made to be a pottery studio, very light and clean, great views, quiet space. Not open to the public. Have your own key, a full rack of shelves and access to all equipment. \$100.00 a month Call Irene @ 286-1145.

New Make your own Decals!

What it is... A decal paper that needs to be printed with a HP laser printer and then is soaked in warm water, like a decal, placed on a fired, non-moving glaze and then fired to cone 06. The laser printer uses black iron oxide as the pigment, so the resulting decal is sepia. The HP LaserJet P100X Series Printers are around \$100.00.

Never before has the process of adding images onto ceramic ware been so customizable and instantaneous as with Creative Images. Any image that can be copied can be produced as a transfer image, including photos or illustrations (even those you create using computer software) and personal images such as hand-written notes, invitations and recipes.

The entire production process takes place, in minutes, within your studio or classroom. No other outside resources are needed.

You can email your artwork (an 8 1/2" x 11" JPG, tiff, EPS or word file) to brant@nmclay.com and for \$7.00 a sheet +postage. I will make you a decal, you can have anything in BLACK and White or grey. No color, decal is sepia. Try to cram as many images or words as possible on the one page.



Brant Palley - New Mexico Clay - 800-781-2529
505-881-2350 Fax 505-881-6067

***New Mexico Potters and Clay Artists
PO Box 26811 Albuquerque, NM
87125***

Presorted STD
US Postage
PAID
Albuquerque, NM
Permit No. 1893

