



The Slip Trail

The Newsletter of New Mexico Potters & Clay Artists / www.nmpotters.org P.O. Box 26811 Albuquerque, NM 87125

JULY 2012

New Mexico Potters & Clay Artists

"..to promote excellence and creativity in the clay arts, and to further their understanding and appreciation throughout New Mexico...."

In this issue:

- Messages from our presidents (out-going/in-coming)
- IAC Fellowship Winners
- Ghost Ranch V-Camp
- Potters for Peace
- Update from Mountainair
- Welcome New Members
- Bill Armstrong Grant
- Advice to Myself
- Where's the Roster
- New Board Members
- Shows and Studio Space
- Celebration of Clay
- International Academy of Ceramics
- IAC Southern Pottery Tour

Send info for the Slip Trail to:

Christina Sullo, Slip Trail Editor
Sliptrail@nmpotters.org

The next issue comes out October 1, the deadline for submissions is September 25th.

NMPCA President's Message

NMPCA Letter from outgoing President

Judy Nelson-Moore

As I step aside from the presidency of the NMPCA, I am thankful for Michael Thornton who has agreed to take on the presidential duties for the coming year. I will still be on the board as Vice President and still fulfilling duties as webmaster. I am grateful for this change because it will enable me to get back into the studio to focus more on my own clay work which has been neglected, as well as concentrate more effort on rewriting the claystudiotour.com website to position it for the future. I am thankful to Phil Green for assistance with the membership website and maintaining claystudiotour.com. I'm especially thankful to Cricket Appel whose dedication to NMPCA is unmatched. Her recent contribution is to scan most of the old slip trail editions between 1985 and 2008 (before we started with the electronic versions) and we now have those available on a DVD (contact me if you are interested). All the members of the board have really pitched in to make NMPCA a responsive organization.

I'm very excited about our upcoming fall Ghost Ranch workshop, which is completely filled (and has people on the waiting list). To be able to see presentations by people like Arthur Gonzales, Alex Kraft, Betsy Williams, Mario Quilles, Frank Willet...all at Ghost Ranch, one of my favorite places on earth. It doesn't get much better than that... except it does, because the Celebration of Clay exhibit will be there as well!

At the annual meeting, I gave a little presentation on the Celebration of Clay, its history, this year's show, and we discussed how we move forward with the exhibit in future years. Talk to a board member if you have ideas for the future of the Celebration of Clay. In the meantime, I know you are all out there in your studios, garages, kitchen tables, and workshops creating something wonderful to put in the 2012 Celebration of Clay. I can hardly wait to see the show!

As I turn to go into my studio, I am reminded of an article that Dick Lehman published in a recent Ceramics Monthly magazine. He is a potter, from Indiana, whose thoughtful and philosophical writings have interested me for some time on his website: dicklehman.com, and his blog at dicklehman.wordpress.com. His recent article contains 20 points of "Advice to Myself" upon his return to the studio after a hiatus to deal with health issues. I asked him if I could quote him and he graciously agreed. See the sidebar for all his advice. My favorite is "Make only the works that bring you joy." That's what I plan to do, clay, kiln and glazes willing!

Judy Nelson-Moore
judy@nelsonmoore.com
www.judynelsonmoore.com

NMPCA Letter from in-coming President

NMPCA members,

As I assume the role of President I want to thank the NMPCA board for the opportunity to serve. I also want to acknowledge Judy Nelson Moore for her enthusiastic and able leadership and to thank her for now taking the position of Vice President.

I became fascinated with the art of ceramics at an early age. As a pre-teen at an art fair, I remember seeing the potter's wheel in action for the first time and thinking: "I want to do THAT!" Summer idyll days would find me riding my bicycle to the public library and bringing home armloads of books. Among them would be books on political cartoons, magic tricks, and POTTERY. Of all the notions which could possess a young man, somehow I envisioned myself as a potter. I didn't know what that would mean, except getting my hands on this magical material, clay. Before my high school days were over I had sold my first pieces of pottery, and I was hooked.

Everyone involved in ceramic art has their own story about what drew them to practice the art. We all have found something fascinating in this medium which affords limitless expressive possibilities to those curious and persistent enough to explore it. Personally, I find In ceramics an intriguing blend of aesthetics and science, and I find that this balance of expressive art and technical craft engages me in a satisfying way.

As President, I look forward to doing my part in support of the NMPCA's continuing mission to promote excellence and creativity in the ceramic arts, and to further its understanding and appreciation throughout New Mexico.

Michael Thornton



IAC Fellowship Winners

Congratulations to each of the winners of the \$600 fellowship to support attending the International Academy of Ceramics 45th General Assembly September 17-21, 2012 in Santa Fe:

Gina Bobrowski
Gloria Gilmore-House
Theo Helmstadter
Alex Kraft
James Marshall

NMPCA Officers, Task Leaders and Board Members

Michael Thornton—**President**
thesaurusstudio@aol.com
505-344-4644

Judith Nelson-Moore—**Vice President**
judy@nelsonmoore.com
505-466-3070

Karin Bergh Hall—**Secretary**
knbhall@cybermesa.com
505-982-3203

Cricket Appel – **Treasurer**
Cricketabq@gmail.com
505-922-1559

Sharbani Das Gupta— **Membership Coordinator**
sharbanidg@hotmail.com
575-627-3447

Lesley Mausolf— **Email Editor**
sws@mountaincomm.us
575-437-6983

Barbara Campbell— **Ghost Ranch Workshop**
bcampbell@valomet.com
505-581-4430

Christina Sullo— **Slip Trail Editor**
christinasullo@live.com
505-803-1675

Kathe MacLaren— **Board Member**
kathe1216@gmail.com
505-835-2406

Phil Green— **Board Member**
pjgreen@comcast.net
505-281-4533

Leonard Baca—**Board Member**
Leonard@bpsabq.com
505-480-8292

Casey Pendergrast—**Board Member**
Chembro22@yahoo.com
505-362-4420

Lee Akins—**Board Member**
Lsakins@gmail.com
505-779-1662

Tomas Wolff—**Board Member**
Wolff.clayworks@gmail.com
505-847-2444

Results of the Ghost Ranch V-Camp

May 18th—20th a group from NMPCA descended upon Ghost Ranch to work on various projects at Pot Hollow.

We accomplished a lot: Modified raku kilns to raise up on guide wires for easier and quicker pulls. Cleaned and inventoried the work area and storage shed, raku area, too. Replastered the fume kiln. Did a cone 6 reduction test firing. Created a French drain for the sink. Repaired steps. Installed a ceramic totem pole. Did some stop-gap repair work on the roof. Hauled trash. Installed more shelves in the Raku area. Cleaned around wood-kiln site and dug out for cement slab under the wood kiln (to be built this summer). Hard-working participants in the weekend included Michael Thornton, Leonard Baca, Jesus Hernandez, Joe Bova, Kathy Baur, Dean Schroeder, Carolyn and Howard Efner, Phil Green, Tomas Wolff, Penne and Jack Roberts, Christina Sullo, and myself (Judy Nelson-Moore). Karin Bergh Hall and Beverly Diamond came up and lent a hand after the board meeting on Saturday. Cricket Appel also joined us for the board meeting. My personal thanks to each and every one of you as well as the thanks of everyone in the NMPCA in whose name the work was done to maintain Pot Hollow at Ghost Ranch.



Installed a ceramic totem pole. Did some stop-gap repair work on the roof. Hauled trash. Installed more shelves in the Raku area. Cleaned around wood-kiln site and dug out for cement slab under the wood kiln (to be built this summer). Hard-working participants in the weekend included Michael Thornton, Leonard Baca, Jesus Hernandez, Joe Bova, Kathy Baur, Dean Schroeder, Carolyn and Howard Efner, Phil Green, Tomas Wolff, Penne and Jack Roberts, Christina Sullo, and myself (Judy Nelson-Moore). Karin Bergh Hall and Beverly Diamond came up and lent a hand after the board meeting on Saturday. Cricket Appel also joined us for the board meeting. My personal thanks to each and every one of you as well as the thanks of everyone in the NMPCA in whose name the work was done to maintain Pot Hollow at Ghost Ranch.

Hall and Beverly Diamond came up and lent a hand after the board meeting on Saturday. Cricket Appel also joined us for the board meeting. My personal thanks to each and every one of you as well as the thanks of everyone in the NMPCA in whose name the work was done to maintain Pot Hollow at Ghost Ranch.



We attended the Bluegrass music concert on Saturday night and had a great time!



Potters for Peace: A Twofold Organization

by Daisy Kates

At the NMPCA annual meeting a motion was made by Penny Truitt and myself to contribute to Potters for Peace. We have both been on “brigades” in Nicaragua (as have other NMPCA members) that are offered by PFP as an introduction to their efforts with local pottery cooperatives and ceramic water filter factories. Brigade participants share their own expertise and also engage in work projects at these sites. We feel we have a kinship with the potters in Nicaragua who are trying to improve their lives by producing a variety of quality ceramic wares, and with the admirable goal of PFP to provide safe drinking water in rural communities around the world with locally-produced and innovative ceramic filters. Clay is an abundant resource in Nicaragua as well as many other third-world countries, which has made the efficacy of these programs possible. The members at the meeting generously voted to contribute \$200 to PFP, and we would like to encourage others to make personal donations as well. In the current economic climate PFP is deficient in contributions (as are so many worthwhile organizations) and they have put out a call for additional funds.

This article hopes to provide information about the water filters as well as give an overview of their ongoing work with local Nicaraguan potters. Much of this material is gleaned from the pottersforpeace.org website where additional details and donation options are available.

Every year 1.7 million people, mainly children under the age of five, die from diarrhea which is caused by unsafe water. The objective of the Potters for Peace Water Filter Project is to make safe drinking water available by helping set up small factories that will produce ceramic water filters made from local materials. These filters are low-tech and low-cost and eliminate approximately 99.88% of water-borne disease agents.

Since 1998, Potters for Peace has been assisting in the production of a low-tech, low-cost, colloidal silver-enhanced ceramic water purifier (CWP) throughout the world and ceramic water purifiers based on the Potters for Peace technology package are now produced at 35 independent factories in 18 countries. These filters are the highest-rated product for rural point-of-use water treatment (Smart Disinfection Solutions, 2010).

The UN’s Millennium Development Goal is to halve, by the year 2015, the proportion of the population without sustainable access to safe drinking water. The objective of the Ceramic Water Purifier project is to meet this urgent demand for safe water in rural and marginalized communities by providing technology that can easily be copied by local fabricators.

A ceramic water filter is a simple, bucket-shaped (11” wide by 10” deep) clay vessel that is made from a mix (by weight) of local terra-cotta clay and sawdust or other combustibles, such as rice husks. The filters are formed by using a press.

The simplest press utilizes a hand-operated hydraulic truck jack and two-piece aluminum mold. Filters are fired to about 860 deg. C. and the milled, screened combustible material burns out, leaving porous clay walls. The filters are tested to make sure they meet a standard rate of filtration and then they are coated with colloidal silver. The combination of fine pore size and the bactericidal properties of colloidal silver produce an effective filter.



When in use, the fired and treated filter is placed in a five-gallon plastic or ceramic receptacle with a lid and faucet. Water passes through the clay filter element at the rate of 1.5 to 2.5 liters per hour.

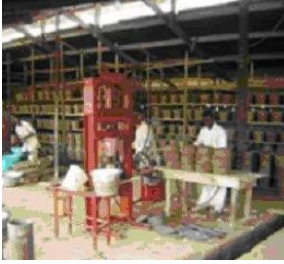
Pricing for ready-to-use filter units, including the receptacle, is determined by local production costs and is usually between \$15 to \$25. Replacement clay filters will cost \$4 to \$6. A basic production facility with three or four workers can produce about fifty filters a day.

The filter design used by PFP was developed in 1981 by Dr. Fernando Mazariegos of the Central American Industrial Research Institute (ICAITI) in Guatemala. The goal was to make bacterially contaminated water safe for the poorest of the poor by developing a low-cost filter that could be fabricated at the community level.

In 1994, the Family Foundation of the Americas (AFA), a Guatemalan organization, became interested in the ceramic water filter when it was found that other strategies were not yielding effective results. Chlorine tablets in rural communities were not well accepted and health complications associated with chlorine misuse caused additional concern. Boiled water wasn’t effective when households failed to boil water long enough to purify it. AFA carried out a one-year follow-up study on the initial Mazariegos-led filter project, and concluded that including this filter in rural health education efforts reduced the incidence of diarrhea in participating households by as much as 50 percent.

In October 1998, Hurricane Mitch tore through Central America. It was one of the most destructive hurricanes ever recorded, and it affected millions of people. Safe water was urgently needed as supply systems (already of borderline capacity and efficiency) had been badly damaged. This prompted Potters for Peace to use the Mazariegos design to begin a Ceramic Water Filter production workshop in Nicaragua. In the first six months over 5000 filters were distributed through non-governmental organizations. The workshop, called Filtron, evolved into a worker-owned cooperative and

is now incorporated as a privately-owned business.



Potters for Peace has since provided consultation and training to set up production facilities in Guatemala, Honduras, Mexico, Cambodia, Bangladesh, Ghana, El Salvador, the Darfur region of Sudan, Kenya, Benin, Yemen, Nigeria, Tanzania, Peru, Somaliland and other countries.

The Ceramic Water Purifier has been cited by the United Nations' Appropriate Technology Handbook, and hundreds of thousands of filters have been distributed worldwide by organizations such as the International Federation of the Red Cross and Red Crescent, Doctors Without Borders, UNICEF, Plan International, Project Concern International, Oxfam and USAID. They have also financed or assisted in laboratory testing and field studies of the filter with various institutions, among them MIT, Tulane University, University of Colorado and University of North Carolina. Potters for Peace is a member of the World Health Organization's International Network to Promote Household Water Treatment and Safe Storage.

The heart and soul of Potters for Peace are the potters of Central America. Since 1989 they have had a full-time presence in Nicaragua. They encourage these potters to maintain their unique aesthetic vocabulary and at the same time they assist them in obtaining and using technologies that can help to make their work economically sustainable. They also help them find markets outside of their local communities.



A

potter from La Sabeneta works with a potter from Loma Panda during a brigade.

Campesina potters can rarely afford the time or money it takes to travel for any reason, even in their own country, and would never visit potters in a neighboring country. Interchanges that allow pottery communities to share their knowledge and skills are an ongoing PFP priority. They provide transportation and cover other expenses in order that the potters can learn from each other.

PFP provides materials, technical assistance and training for building equipment such as wheels, extruders, energy-efficient kilns and burners. Most often the potters buy equipment at a PFP subsidized price, either by payments or by trading for pottery.

PFP contracts professional designers for both long- and short-term work in the communities in order to refine existing products and develop new ones in order to maximize their marketability.



A Mani kiln.

Manny Hernandez, a retired Northern Illinois University professor, who was also a PFP technical volunteer, has developed a fuel-efficient downdraft kiln called the "Mani" kiln, which is constructed with local brick and labor and can reduce firewood use by up to 50%. After Hurricane Mitch devastated Central America in 1998, Manny went to Nicaragua and trained a kiln-building team. In two months 15 kilns were built, and the potters were back in production. To date, more than 60 Mani kilns have been built worldwide.

Celebration of Clay Exhibition **September 5 through October 2, 2012.**

Celebration of Clay is our "All Members" exhibition. All members are encouraged to submit their best work to help show what NMPCA is all about. Last year we had 40 members participate and it was a huge success.

Consistent with our plans to hold the exhibit in various places and so promote ceramic art around the state, this year's exhibit will be at the Ghost Ranch museum.

Registration information is available at www.nmpotters.org.

Additional information and form on page 12.



These clay masks fashioned after pre-Colombian ones were some of the artwork of

seven and eight year olds in a summer class in Mountainair.

The classes were part of a multimedia series of classes held for four weeks at the local school. Funding came from a grant from the BNSF Railroad, since Mountainair was initially build to serve the railroad in 1903.

The original grant for children's clay classes in Mountainair, which started a year ago, came from the New Mexico Potters and Clay Artists!

It shows how an initial financial boost can get things going.

Thanks to all of you.
Tomas Wolff

NMPCA New Members 2nd quarter, 2012

We have many new members who have joined NMPCA as part of their registration for the September Ghost Ranch workshop. These include: Trisa Ulrich, Karen King, Nina Harrison, Sharon Freeman, Joan Embree, Nina Harrison, Gratia Brown, Kate Bertin, and Suzanne Kent and Michael Dutcher.

Here's some information about other new members.



John Zimmerman, Gallup, NM

Clay Work: I make large scale recognizable contemporary objects out of clay that are then textured with geologic stratification. My attempt is to make connections between the distant past and present day.

Interests: As an Assistant Professor at the University of New Mexico-Gallup, I am deeply invested in bringing scholarly and artistic activity to the New Mexico community in general and my students in specific.

Laura Robbins, Placitas, NM

Laura works with clay sculpture and as part of mosaic work.

Richard Orlando, Albuquerque, NM

Clay Work: Wheel thrown porcelain, via the Arita method.

Alaura Nellos, Albuquerque, NM

Clay work: Wheel throwing, figurative sculpture.
Interests: Workshops

James Marshall, Santa Fe, NM.



Clay work: ceramic sculpture.
James is a professor of ceramics at Santa Fe Community College.
NMPCA interests: To connect with the clay artists of New Mexico
See more of his work at jamesmarshallart.com

Leona Lazar, Denver, CO

Works in ceramic and mixed-media sculpture
Interests are Workshops, Exhibition Information:
Call for entry & shows, Seminars/meetings - regional and throughout country.
Leona plans to attend the September Ghost Ranch workshop.

Alex Kraft, Gallup, NM

Alex is one of the presenters at our upcoming workshop at Ghost Ranch. She says she is looking forward to working with us all. See her work at alexkraftart.com

Andrew Haley

Clay Work: Currently, I am making utilitarian pottery thrown on the wheel as well as medium size sculptures that are a combination of hand building and wheel thrown.

Interests: I would like to become more connected with potters of New Mexico. I am currently doing a residency at Taos Clay.

Emma Lee Clarke, Albuquerque, NM

Clay Work Description: Hand building in earthenware, painting with natural pigments, pit/sagger fire ^06- ^04 also ^6 soda
Interests: events, workshops, gallery visits

Bill Armstrong Grant for 2012 awarded to the New Mexico School for the Arts

by Daisy Kates

This year we received four applications for the annual Bill Armstrong Grant. The proposals were from the Fuller Lodge Art Center, Ghost Ranch, the New Mexico School for the Arts and the Silver City Museum clay mural project. The grant supports endeavors in education in the ceramic arts and is often a difficult choice between several requests to support very worthwhile programs. As we have done for many years, Penne Roberts and I researched the proposals by making phone calls and site visits and deliberated over the relative merits and details of each request. After summarizing our observations and recommendations, a final discussion with the Board determined the recipient of the grant.

The final decision for the grant was in favor of the New Mexico School for the Arts, a two-year old state charter high school in Santa Fe dedicated to providing high school students with a quality education in a variety of arts. They were awarded \$975 to fund a three-session workshop in October, 2012 with Maggie Beyeler. The workshop will teach slabs and surface decoration ... including the use of ceramic decals. The money will cover teaching fees, firing, materials and a laser jet printer for the decals which will provide a piece of equipment that will be utilized by the ceramics program in the future for this technique. Edie Tsong, the ceramics instructor at the school, proposed this particular workshop because of its personal nature and the use of graphics and technical skills, all of which would appeal to a broad range of the visual arts students.

Penne and I were impressed with our site visit to the New Mexico School for the Arts. The staff was extremely sincere in their efforts and aspirations and the workshop seemed well-chosen and appropriate to the art students' interests. The classrooms we observed showed that the students were very focused and engaged in their activities. The workshop could not be held without the grant monies as the school's resources are very limited.

Details about the Bill Armstrong Grant are available on nmpotters.org with the programs/grant link. Applications are due Feb.1st and awarded by June 30th every year.

Advice to Myself

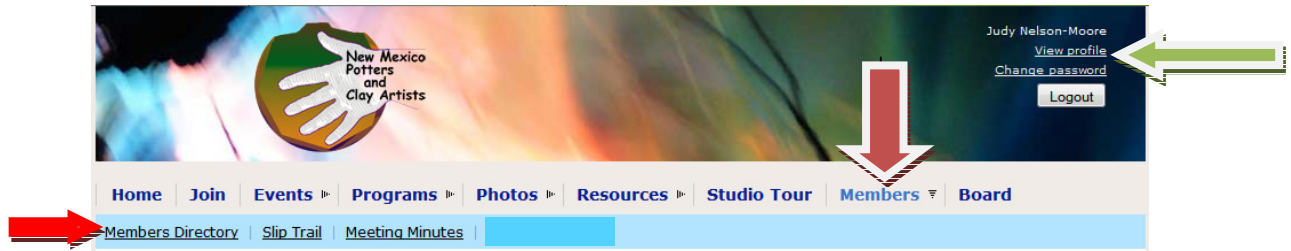
Dick Lehman, Goshen, Indiana, 2012

(reprinted by permission of the author)

- Be purposeful and deliberate about your social, intellectual, and artistic stimulation. Transition can be isolating.
- Expose yourself to new artistic stimuli.
- Make only the works that bring you joy.
- Cook. Put ingredients together in new ways.
- Work in a media you've never tried. Reclaim a beginner's mind.
- Plumb your dreams.
- Consider the attributes and temperament of an artist you admire.
- Focus on the emotions that you would like your work to convey.
- Repair a broken pot: find beauty in brokenness.
- Fire your work differently or multiple times. Fire longer than you usually do. Fire your work in a barbecue grill or a wood-fired bread oven, or ...
- Journal or draw.
- Attempt to reclaim the naiveté of your early days working in clay. Forget some of what you already know.
- Wonder, wonder, wonder.
- Keep track of one satisfaction each day from your work in clay.
- Be kind, gentle, and patient with yourself in the process of transition.
- Challenge yourself physically. Lose weight, gain endorphins.
- Accept assistance when offered.
- Compete only with yourself.
- Assist someone else. Explore the pleasure of your own generosity.
- Continue to investigate what you already know.
- Look, look, look!

Where's the Roster?

Those of you who have been long-time members of the NMPCA remember that the Slip Trail issue after the annual meeting traditionally contained a roster of members. For the last two years, instead, we have an on-line membership roster. Never seen it? Here's a picture of the top portion of your screen when you are logged into the membership website at www.nmpotters.org. (First, you must login in the upper right area shown by the green/white arrow.) The red/white down arrow shows where you find the members-only content after you have logged in. The red arrow on the left shows the types of member-only content: Members directory, slip trail, and meeting minutes.



When you choose the Members Directory, you see content similar to below. You can click to see the board members, Armstrong grant committee, and Slip Trail editor.

Members Directory

To control what information of yours is revealed in this directory, click at above right on view profile... then edit profile...privacy. By default, your name, city, studio name, email address and phone numbers are shown. You can choose to hide any of these or reveal your address.

Group participation

[Board \(14\)](#)
[Grant \(2\)](#)
[Slip Trail \(1\)](#)
[Advanced search...](#)

Search: Found: **197** Show: [Akin - Dons \(1-50\)](#)

Name	City	Group	Contact Info
Akin, Lee	Boschard, Tom	Board	judy@nelsonmoore.com

Just put in part of a name in the search box to find someone. When you pull up their information, what you see will depend on what the individual member has decided to share. By default, members can see name, email address, city, state, phone number and group (such as board or committees). However, by going into your own profile (view profile at the top right of screen), you can choose to share other profile information and even enter photos of your recent work!

judy@nelsonmoore.com

Member profile details

Membership level	Studio Tour
First name	Judy
Last name	Nelson-Moore
Studio Name	Dancing Mud Studio
e-Mail	judy@nelsonmoore.com
Phone	(505)466-3070
Phone 2	(505)795-6448 (cell)

Contact data

Website	judynelsonmoore.com
Address	23 Immanuel
City	Santa Fe
Postal code	87508
Province/State	NM
Country	USA

Describe how you work with clay

Clay Work Description	Hand-built sculptural work using primarily paperclay. Oxidation, multi-fired cone 08-6.
-----------------------	---

Tell us your interests for NMPCA activities

Special Interests	Ghost Ranch, local gatherings, furthering the excellence and renown of ceramics in our state.
-------------------	---

Administration

NMPCA Job	Vice President and Webmaster
Group participation	<input checked="" type="checkbox"/> Board

Member photo albums (1 Album)

Results of NMPCA elections, June 25, 2012

New board members elected by the membership at the annual meeting:

Lee Akins
Leonard Baca
Casey Pendergast
Tomas Wolff

Re-elected for 2nd term:

Lesley Mausolf
Cricket Appel

Officers elected by Board at board meeting on June 25, 2012

President, Michael Thornton
Vice President, Judy Nelson-Moore
Treasurer, Cricket Appel
Secretary, Karin Bergh Hall
Ghost Ranch Coordinator, Barbara Campbell
ENews: Lesley Mausolf, with assistance from Leonard Baca
Website: Judy Nelson-Moore with assistance from Phil Green
Membership: Sharbani Das Gupta, assistance from Kathy Cyman

Introducing our new Board Members

Lee Akins was born in Texas but spent most of his early years in Taiwan. He received his B.F.A. from the Dayton Art Institute, Dayton, Ohio in 1975 and M.F.A. from Southern Methodist University in Ceramics in 1986. He has taught ceramics at the college level for more than 30 years including Dallas County Community College and Colin College. In 2008 he retired early and moved to Rinconada in northern New Mexico to become a full time studio potter. He currently teaches part-time at Santa Fe Clay and Northern New Mexico College, Espanola.

Lee coil builds terracotta, creating vessels and sculptures influenced by his time in Asia. His work has been featured in ceramic magazines and publications including an article in Ceramics Monthly, August/September 2006.

Tomás Wolff is a clay and mosaic artist and arts educator who has worked as a consultant for many schools and social service agencies in Pennsylvania's Lehigh Valley and more recently in Mountainair, New Mexico. He continues to receive grants from federal, state and local governments and non-profit agencies to help initiate community art projects involving local youth and adults. He has worked at the Banana Factory arts center in Bethlehem, Pa., where he helped initiate a summer mosaic art mural project for high school students. From his studios at the Mountain Arts on Broadway in Mountainair, and at area schools, he teaches classes in clay hand-building and mosaics for youth and adults. He has a bachelor's degree in sociology from the University of Hawaii, where he was stationed while in the U.S. Navy, and a master's degree in education from Yale University. His art work has been exhibited at local art galleries, and at galleries in New York City and Philadelphia.

Casey Pendergast. Ever since I moved to New Mexico way back in 2003... I was searching for clay. I found stoneware at UNM and shortly after found porcelain. In my hunt for this sacred material, wonderful things began to emerge. I made colorful sculptures, functional beauties, and some pretty ugly things, too. My membership to the NMPCA and first gallery sale as an artist materialized through the Celebration of Clay in 2005. I began to explore natural clays straight from the ground thanks to Clarence Cruz. Alas, it was time to graduate in 2007 with a BFA and a chunk of knowledge to launch me into the real world of ceramics. So, I stayed at the university and studied porcelain under Kathy Cyman for 2 more years. I also dabbled in sales and taught classes out in the East Mountains of Albuquerque at Aspects of Clay. I expanded my glazing by trying a class at SFCC instructed by Craig Donalson in 2010. In 2011 I found myself rebuilding a gas kiln with help from my friends at the Old Schoolhouse Gallery, getting accepted to a national show, and participating in the all-so famous Contemporary Clay Fair. This year, I find myself very busy in and outside of the Albuquerque area on my ceramic art journey. Blending my influences has brought me to a personal expression of hand dug glaze materials melted with porcelain as well as stoneware sculptures and functional vessels. The NMPCA has helped me through this journey which makes me thrilled to serve as a board member. I hope to bring a youthful vision to the association and immerse myself in the wisdom of such a great organization. You can find me working away in the clay studio at the Old Schoolhouse Gallery, learning ceramics at Santa Fe Community College, or in the StudioTour on the NMPCA website.

Leonard Baca, earlier this summer I went to help at the volunteer camp at Ghost Ranch, this was the second time meeting members of NMPCA, we all had a great time and it was nice to see Pot Holler blossom. That is where two friends ask me if I would like to help out and be a candidate for the board of the organization. I thought it would be a great way to meet new people who enjoyed the feel of clay as much as I do. I have been working with clay for two years. I have been amazed at the diversity of ceramics and pottery in New Mexico and the talent we have as artist. I look forward to meeting more people and developing my craft. I work with my brothers Danny and Henry and my sister Sylvia in our Printing business. It is a family business on its 44th year. I enjoy working with clay and would like to take my experience of woodworking, photography, graphic design & gardening to intertwine ideas into my work. I look forward to the upcoming year on the board, if you have any questions or ideas to share with me or other members of the board please let us know. I will be helping Lesley Mausolf with the eNews (email updates) and updating the NMPCA Facebook page (New Mexico Potters and Clay Artists). So fare there are 70 likes, so if you want something posted just let me know.

If you have questions please contact a board member. Contact information is available on the web site.

SHOWS AND STUDIO SPACE

Silver City Clay Festival!

Title: Silver City Clay Festival

Location: Historic Downtown in Silver City, NM

Dates: August 3-5, 2012

Description:

Come to historic and friendly Silver City, NM, for the first annual celebration of New Mexico clay. The Silver City Clay Festival will showcase tile, pottery, and adobe. There will be three days of workshops, demonstrations, sales, and exhibits of clay art of all kinds; child-friendly activities, lectures, tours, and films; receptions, dances, and galas.

For complete information on this exciting event and for a prospectus and entry form for the Juried Art Tile Show, please visit: www.clayfestival.com

Sponsored in part by: Laguna Clay, Tile Heritage Foundation, Global Center for Cultural Entrepreneurship, NM EPsCOR, Silver City Arts and Cultural District, WNMU Museum, Syzygy Tileworks, and the Town of Silver City.

Name: Sherry Logan

Location: 106 N. Bullard St., Silver City, NM 88061

Contact Info

Telephone Number: (575) 538-5560

Email Address: info@clayfestival.com

Website: www.Clayfestival.com

Shared Studio Space Available

Pottery Classes Available

Between Sandia Park and Edgewood

Near Mountain Valley Road and Frost Road

Pottery studio, very open and clean, great views of the mountains, south facing windows for great light, nice quiet space. Not open to the public. Have your own key and access to equipment, 4 wheels, cone 10 electric with controller, Raku, lots of room. Space is also available for people wanting to teach. \$100.00 a month Call Irene @ 286-1145.

There are classes available are for beginners and ongoing students, flexible schedule, reasonable prices, call 286-1145 and ask for Irene.
www.reneesraku.com

International Academy of Ceramics Studio Tours

The information, dates, pricing etc on NY and NC is available on the AAIC website at <http://aaiceramics.org/iac2012/registration/tours/>

Day passes for the assembly are now available on the AAIC Website: <http://www.regonline.com/Register/Checkin.aspx?EventID=1118282>

For more complete information on the event: <http://aaiceramics.org/iac2012/registration/> Please follow the links to information about all events of the assembly.

If you have never been to Penland or the North Carolina pottery community here is a great opportunity: The AAIC is offering a pre-assembly tour that might interest you.

Five days, four nights, everything included is a good deal at \$1560 double/\$1960 single. Just gotta get there.

There is also a NYC and Philly tour (including the Clay Studio). The information, dates, pricing etc on NYC/Philly and NC is available on the AAIC website at <http://aaiceramics.org/iac2012/registration/tours/>

Or maybe you would like to be culture tourist at home in New Mexico. Post-assembly tour of NM starts Saturday, September 22. The following Thursday Sept 27 we head to Mata Ortiz in Chihuahua. See: <http://aaiceramics.org/iac2012/registration/tours/> for detail information.

Karin N. Bergh

SANTA FE STUDIO TOUR 2012

Visit me at my Studio

Saturday, June 30 & Sunday, July 1 / 10 am - 6 pm

ONE-OF-A-KIND
Sculptures

& hand-decorated
mugs / pitchers / bowls
tiles / vases / platters



#24 on official
Santa Fe Studio Tour map

KNB pottery

8 Calle Jacinta
Santa Fe, NM 87508
505-982-3203



Call for Entries

Celebration of Clay - 2012

Sponsored by the **New Mexico Potters & Clay Artists**

As a member of the **New Mexico Potters & Clay Artists**, you are invited to participate in an all member exhibit!

This is another opportunity for us to feature the breadth and depth of ceramic works created by our members.

September 5 - October 2, 2012

The exhibit will be held at:

Ghost Ranch Museum

at the Ghost Ranch Conference Center, Abiquiu, New Mexico

Opening Reception

Friday, September 7, 2012

3 to 5:30 PM

Awards will be announced at the Reception

Best of Show Prize: \$150

Beauty, Quality & Functionality Award \$100

Harnack/Lancaster Award: \$200

3 additional \$50 Merit awards

NMPCA Celebration of Clay, 2012

ELIGIBILITY

All Members of New Mexico Potters & Clay Artists are eligible. If you are not a member and would like to participate, please include \$25 membership dues in addition to entry fee. Student membership is \$10.

ENTRIES AND FEES

You are invited and encouraged to enter your best work! Each member will be permitted to enter up to two pieces. The acceptance and showing of the 2nd work depends on space available. There are no restrictions imposed on submissions. (Except, in this locationspace for wall-hung pieces is limited.)

Entry Fee is \$15. Entry Fee must be received with entry. Please submit your entry and pay entry fee online at www.nmpotters.org on the event registration page. All entries must include an email address to receive important news about show details.

OPENING RECEPTION

The opening reception will be Friday, September 7 from 3 to 5:30 pm. A jury will select the award-winning pieces and the winners will be announced at the reception.

SALES

We prefer submissions be for sale. Be sure to indicate NFS/value on entry if you do not wish to sell your piece(s). Sales will be handled by the Ghost Ranch museum, with a 40% sales commission.

BIO INFORMATION

To be considered for inclusion in the publicity, send a high-quality digital image of your submission between July 15 and July 31st, 2012 to [COC@nmpotters.org](mailto:coc@nmpotters.org). Also, please prepare a one-page bio/artist statement when you deliver your pieces or email your bio/artist statement to coc@nmpotters.org. This will be placed in a display notebook, so be sure to include contact information.

INSURANCE

The museum does not provide coverage for breakage. Please make your own arrangements if desired.

VOLUNTEERS

In order to make this exhibit a success we need some of your time. Please volunteer for one of the following:

- Check-in of artwork at the museum, September 4, 2012
- Show installation at the museum, September 4, 2012
- Provide central collection point for artwork, coordinate with artists, August 15 to August 31 and return October 4-6.
- Transport artwork from Central Delivery location to Ghost Ranch Museum, August 31st to September 4.
- Transport unsold artwork from Ghost Ranch Museum to central delivery location, October 4.
- Coordinate hospitality at reception
- Prepare publicity for show
- Coordinate award jurors
- Coordinate volunteer jobs

Because the location of the show, the Ghost Ranch Museum, in Abiquiu, is more remote to many members, we plan to have central collection locations in several places around the state, and members will volunteer to transport work from central collection point to the museum.

Questions? Contact Judy Nelson-Moore at (505)466-3070

Please submit your entry and pay entry fee online at www.nmpotters.org on the event registration page.

If you cannot submit on-line,
send a registration form and check to

Judy Nelson-Moore
23 Immanuel
Santa Fe, NM 87508

TIMELINE

Entry forms and fees completed online or postmarked	July 31
Send digital image for publicity to coc@nmpotters.org	July 15-31
Email bio to coc@nmpotters.org or print copy and deliver with work	August 31
Deliver work to central collection points for transportation to museum	August 31
Deliver work to museum, show setup	September 4
Opening Reception, announcement of awards	September 7
Retrieve work	October 3
Retrieve work from central collection points	October 5-6

Celebration of Clay Mailed 2012 Entry Form

complete and mail form and entry fee to Judy Nelson-Moore, 23 Immanuel, Santa Fe, NM 87508
or, better yet, enter on-line at www.nmpotters.org

Name _____

Address _____

City, State Zip _____

Phone: _____

Phone 2: _____

Email*: _____

I will volunteer to help with: _____

*Please provide an email address so we can send you essential information about your participation in the event. If joining with membership, enclose an additional \$25 for regular membership or \$10 for student membership.

Labels for your entries. Complete one copy and return with entry form, attach another copy to your work.

Title #1 _____ Artist Name _____ Dimensions (h x w x d) _____ Price or NFS and value _____	Title #2 _____ Artist Name _____ Dimensions (h x w x d) _____ Price or NFS and value _____
Title #1 _____ Artist Name _____ Dimensions (h x w x d) _____ Price or NFS and value _____	Title #2 _____ Artist Name _____ Dimensions (h x w x d) _____ Price or NFS and value _____

Enclosed	
Entry Fee	\$ 15.00
Membership	\$ _____
Total	\$ _____



**New World:
Timeless Visions**
LA FONDA HOTEL
on the **PLAZA**
Santa Fe,
New Mexico
SEPTEMBER
17 – 21, 2012

S A N T A F E 2 0 1 2

The International Academy of Ceramics 45th General Assembly

New World: Timeless Visions presents one week; six lectures; six panels; one international exhibition; the IAC members exhibition at the New Mexico Museum of Art; one national exhibition, *Ecumene: Global Interface in American Ceramics* sponsored by NCECA at the Santa Fe Community College; 2 dinners; New Mexican and Native American entertainment; day trip to Taos Pueblo; 3 Taos museums; Mata Ortiz demonstrator, & The Art Stream Trailer.



The IAC is an NGO
under the
auspices of
UNESCO
www.aic-iac.org



Hosted by
The American
Association
of International
Ceramics



EXHIBITIONS



New World: Timeless Visions

The IAC Members Exhibition
at THE NEW MEXICO MUSEUM OF ART
107 West Palace Avenue, Santa Fe, New Mexico,
just off the downtown Plaza

Ecumene: Global Interface in America Ceramics

at The Santa Fe Community College Gallery
Sponsored by the National Council on Education
for the Ceramic Arts

Patina Gallery American Visions in Clay

Featuring 15 IAC Member Artists
131 West Palace Avenue, Santa Fe 505.986.3432

Robert Harrison, *Blue and White House #23*,
Water-jet cut glazed terra cotta tiles with decals and gold
luster, 6.75"x6.75"x7.75"(H), 2010

TOURS

Big City Tour. Wednesday, September 12 – Saturday, September 15, 2012: New York City and Philadelphia with behind the scene visits to museums, private receptions at galleries, day trip to Storm King and Dia Foundation, Mad, MoMA, Metropolitan and Philadelphia Museums of Art, artist studios, and private collections. Special reception hosted at The Clay Studio in Philadelphia and off Broadway musical in East Village, NYC. 5 nights 4 days.

Southern Pottery Tour. Tuesday, September 11 – Sunday, September 16: North Carolina: Charlotte, Mint Museum, Asheville, galleries and Biltmore House, overnight at Penland School, pottery and studio visits, & North Carolina Pottery Center, Seagrove, NC.

NM Pueblos, Monuments, and Treasures. Saturday, September 22 – Thursday, September 27, 2012: Ghost Ranch, lectures, demonstrations, San Ildefonso Pueblo, Santo Domingo Pueblo, Acoma Pueblo, Bandelier National Monument, Petroglyph National Monument, private collections, pottery and studio visits, Maxwell Museum of Anthropology, Albuquerque museums, and El Rancho de las Golondrinas a living history museum. Depart from ABQ airport.

Mata Ortiz, Chihuahua, Mexico. Thursday, September 27 – Sunday, September 30, 2012: Visit the potters in the village of Mata Ortiz; the Amerind Foundation Museum, Dragoon, Arizona; Paquimé pre-Columbian site and museum; Colonia Juárez; and Tombstone, site of the OK Corral. Depart from Phoenix airport.



For more information visit:
aaiceramics.org/
aic-iac.org/
patina-gallery.com/



IAC 2012 Schedule

All events are in the Lumpkins Ballroom, La Fonda Hotel unless otherwise indicated

Ongoing Monday -
Thursday, 9-
5:00pm

The Art-Stream nomadic gallery will be parked on the street near the La Fonda Hotel.

Breakfast is on your own each day. Coffee breaks with snacks are provided mid-morning and mid-afternoon. Monday night dinner with local New Mexican Rhumba band, El Cielo, is included. Lunch Friday in Taos is provided (a picnic in the park) and Friday night dinner with Native American entertainment, dancers and flautist, is included.

DAY/TIME	EVENT	PRESENTER(S)	DISCIPLINE	SUBJECT/NOTES
Monday, Sept. 17				
7:30 - 9:00	Registration. The Stiha Room			2nd floor La Fonda Hotel
9:00 - 10:45	General Assembly	Janet Mansfield, Joe Bova, Dignitaries	Mansfield is President of IAC. Bova is Program Chair of the Assembly	
10:45 - 11:00	Coffee Break			included
11:00 - 12:00	Keynote Address	Peter Held	Ceramics Curator - ASU Art Museum Ceramics Research Center	
12:00 - 2:00	Lunch			on your own
2:00 - 5:30	First General Assembly Meeting	All IAC Members only		Non-members will not be admitted.
NON- MEMBERS: 1:00-2:30 Visti 3 musuems self-guided: Georgia O'Keeffe, NM History, & Contemporry Native Arts. Complimentary admisson 2:30-4:30 TOUR SANTA FE: tram tour of the city covering an 8 mile loop in an open air tram that includes the most important historical areas in Santa Fe 4:30 - 6:30 free time or visit Museums near hotel: New Mexico Museum of History, Georgia O'Keeffe Museum TBA, and Museum of Contemporary Native Arts, complimentary admission.				
5:30 - 7:30	Free Time			
7:30 - 9:00	Welcome Reception/Dinner - La Fonda Rooftop Terrace	El Cielo music		included
Tuesday, Sept. 18				
9:00 - 10:15	Lecture	Richard Sennett, Ph.D	Scholar and Author <i>The Craftsman</i>	Professor, NYU and London School of Economics
10:15 - 10:30	Coffee Break			included
10:30 - 12:00	Panel	Judith Schwartz, Ph.D. (m), Helen Drutt, Ezra Shales, Ph.D., Alleghany Meadows	Artist, Gallerist, Scholars	Perspectives on Contemporary American Ceramic Art
12:00 - 1:45	Lunch			on your own
1:45 - 3:15	Lecture	Lonnie Vigil, Native American Pueblo potter from Nambé Pueblo	Artist/Micaceous Clay pottery	His work, his life, his culture
3:15 - 3:30	Coffee Break			included
3:30 - 5:00	Panel	Jean McLaughlin(m), Casebeer, Guido, Gulden, Lee	Ceramic center and craft school directors	American Visions: Alternative Studies
5:00 - 7:00	Free Time - Dinner On Your Own			on your own
5:00 - 7:00	Opening reception/Patina Gallery	Invitational Benefit Exhibition	American IAC Members	"American Visions in Clay"
7:00 - 9:00	Members' Exhibition and Lecture, followed by Reception New World: Timeless Visions , the members exhibition at the New Mexico Museum of Art	Poet and author	TBA	exhibition/lecture

IAC 2012 Schedule

Wednesday, Sept. 19

all day 9-5:00pm					Mata Ortiz Pottery Sale and Demonstration. Located in Santa Fe Room, first floor					
8:30 - 9:30	Lecture	Andy Brayman, Del Harrow	Brayman founded the Matter Factory; Harrow is a collaborating artist at the Matter Factory.	Digital Explorations in Ceramic Art						
9:30 - 9:45					Coffee Break					included
9:45 - 11:45	Panel	Beverly R. Singer, Ph.D. (m), Nora Naranjo-Morse, Roxanne Swentzell, Rose Bean Simpson	Scholar, artists	Generations: Women from Santa Clara Pueblo						
11:45 - 1:30					Lunch					on your own
1:30 - 2:30	Lecture	Magdalene Odundo	Master Potter; Officer of the Order of the British Empire (OBE)							
2:30 - 2:45					Coffee Break					included
2:45 - 3:45	Lecture	Garth Clark	Award winning Author and Critic	<i>Vulcan God: Lucio Fontana Romances the Kiln 1926-1968</i>						
4:15- 5:45					Concurrent Sessions					
	1. Collaborative Discussion	Schwartz, Brayman, Casebeer								
	2. Collaborative Discussion	Lawton, Harrow, Guido								
	3. Panel, and Collaborative Discussion	Moyra Elliott(m), Odundo, Lonnie Vigil, Manos Nathan, Christine McHorse	Artists, Writer/critic	Global Traditions Contemporary Ceramic Practice						
	4. Panel, and Collaborative Discussion	Elaine Henry (m), Marc Leuthold, Rose B. Simpson, Itsue Ito, Ilona Romule	Artists, Publisher/editor	Divergences and Congruences in International Practices						
5:30 - 7:00					Free Time - Dinner On Your Own					on your own
7:00 - 10:00	NCECA Exhibition: <i>Ecumene: Global Interface in America Ceramics</i> . Santa Fe Community College			exhibition, reception at the college, shuttle buses						

Thursday, Sept. 20

all day - 9-5:00pm					Mata Ortiz Pottery Sale and Demonstration. Located in Santa Fe Room, first floor					
Final Assembly Meeting		IAC Members Only			Non-members will not be admitted					
NON-MEMBERS 10-1:00					Visit El Rancho de Las Golondrinas, a living history museum, http://golondrinas.org/index.html lunch provided. Buses leave hotel at 10:00 AM.					
Lunch					on your own					
1:30 - 3:00	Panel	Jim Romberg (m), Elaine Henry, Mary Barringer, Moyra Elliot, Sherman Hall, Tina Byrne	Editors/publishers, writer/critics	The Critical Article - Definition, Use, Implementaton						
3:00 - 3:15					Coffee Break					included
3:15 - 4:30	Panel	Peter Held (m), Jim Lawton, Marc del Vecchio, Natalie Fitz-Gerald	Artist, Collector, Gallerist	Collecting: Its role in the life of the Artist						
4:30 - 8:00					Free Time - Gallery Openings					
8:00	Free evening		attendees	members						

IAC 2012 Schedule

Friday, Sept. 21

TAOS DAY TRIP

BUSES LEAVE PROMPTLY AT 7:00 AM

7:00 - 6:00	Day Trip. Taos New Mexico. Harwood Museum, Millicent Rogers Museum, Taos Art Museum, Taos Pueblo. Lunch provided.	Visit Taos Pueblo, UNESCO World Heritage site + 3 Museums
-------------	--	--

7:00 pm - 10:30	Reception/dinner/entertainment. Museum of International Folk Art; Museum of Indian Arts and Culture. Museum Hill, Santa Fe	included
-----------------	---	----------

Bon Voyage/Buen Viaje.. OR if you are joining the post-assembly tour of New Mexico and Mexico - See you in the Morning!