



The Slip Trail

The Newsletter of New Mexico Potters & Clay Artists | www.nmpotters.org | P.O. Box 26811 Albuquerque, NM 87125

July 2010

New Mexico Potters & Clay Artists

"...to promote excellence and creativity in the clay arts, and to further their understanding and appreciation throughout New Mexico...."

In this issue:

- ◆ Message from our new president
- ◆ NM Potters "Cookie Caper"
- ◆ June 6 Annual Meeting Minutes
- ◆ Discovery Corner – Mary Sharp Davis
- ◆ Classifieds
- ◆ Critical Santa Fe Scholarship App
- ◆ Shows, Announcements, Workshops
- ◆ June 6 Board Meeting Minutes

The Trail has a new editor!!!

I'm happy to announce that a member has volunteered to become editor of the Slip Trail. Christina Sullo is a fairly new NMPCA member. She attended the recent annual meeting in Santa Fe and enjoyed the gathering. She has done newsletters before so she brings some experience into the position. I'm sure we can all look forward to some changes, which will be inspiring. You will get a more thorough introduction to her in the next issue. I have truly enjoyed being the editor since 2004 and am pleased to be able to pass the task along to someone with new energy and perspective. When you have the opportunity, be sure and welcome Christina in her new position.

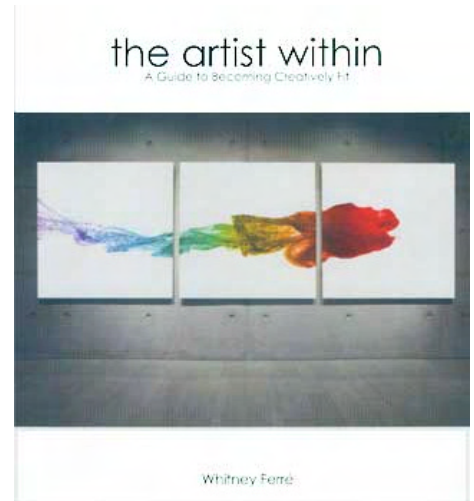
Phil Green
505-281-4533
pjgreen1@comcast.net

NMPCA President's Message

by our new president, Judy Nelson-Moore

I have a book in my art personal art-book library, *The Artist Within – A Guide to Becoming Creatively Fit*, by Whitney Ferré. When I first bought this, I wanted a book about design principles of making art. I found out the subject is living life creatively. The author discusses and has exercises in using design principles to expand your thinking about all aspects of your life: Emphasis, balance, proportion, unity, harmony, contrast, rhythm, and repetition. Recently I opened the book again

as I was thinking about taking on the job of president of the NMPCA. I realize that, while the NMPCA may not always look from all perspectives like a work of art, being the president will be to engage in a collaborative creative effort...collaborating with the other board members and all NMPCA members in creating a work-of-art organization.continued on page 2



New Mexico Potters support the 15th annual "Cookie Caper" at Bishop's Lodge

by Judith Richey

In January, the Girl Scouts of New Mexico Trails, Inc. invited New Mexico clay and glass artists to participate in the 2010 Cookie Caper held April 9th at the Bishop's Lodge in Santa Fe. Artists were asked to create cookie jars or cookie related art pieces to be auctioned at the benefit that evening. Spectacular desserts were also created for the evening's events by chefs from the Santa Fe area. While guests enjoyed a wonderful assortment of hors d'oeuvres and desserts, they were able to view the artwork and place bids on the pieces. Guests were also asked to vote for their favorites for the people's choice award.

Eighteen clay and one glass artist donated pieces for the event. Of the clay artists, fourteen are members of NMPCA: Karen Bergh, Tony Butler, Karen Fielding, Thelma Hahn, Cheryl Hoagland, Marc Hudson, Nausika Richardson, Judith Richey, Kari Rives, Rita Ryan and her daughter Stephanie Ryan, Joey Serim, Kristin Thatcher, Michael Walsh, and Betsy Williams.

Three art pieces were selected for special recognition with the people's choice awards. Winners were Judith Richey - third place, Barbara Yarnell – second, and Nausika Richardson – first. They received monetary awards and beautiful Nambé candleholders.

NMPCA President's Message (.....continued from page 1)

Like all collaborative efforts, each artist/member of the effort has a different vision of what the "work" should be like. I think perhaps the responsibility of the president is to help everyone to see the whole; entice, cajole, engage people to work on the parts; and encourage balance, harmony and unity in the results.

OK, so let's discuss the design principle, balance, as it applies to our collaborative work at NMPCA. Hopefully it is obvious I'm using the word "work" as in "work of art." The design principle of balance can mean symmetry or asymmetrical balance in a physical art work. In an individual, balance can relate to being well-rounded in your activities or thinking. In our organization, balance could imply a goal of making sure the activities of the group reflect different interests, working methods, and education in different aspects of ceramic arts. It can also reflect balanced participation of members so that all the efforts are not expended by just a few while other members feel excluded. If the efforts necessary to create the activities of NMPCA are expended by just a few, those few become burnt out, used and worn-out, or may feel justified in doing things their own unbalanced way since nobody else seems interested. In contrast, those who prefer to just pay their dues and reap whatever benefits come their way, might develop a perception that the organization is not meeting their needs at best, or at worst is cliquish or catering to the needs of only a few. Both groups may feel they are not getting something worth their "investment" in the organization. This is definitely not a balanced situation! I'm not saying that the current NMPCA is in this situation, but I do know we have trouble finding people willing to step forward and roll up their sleeves to participate. At the same time, I do see lots of ideas and interest in the membership...I'm currently thinking it is a matter of finding the balance. I have always operated on the principle that it is not fair to make a criticism or put forth an idea for an organization unless I am willing to step up to the plate and put in the effort to make it happen. Hence...here I am as the President, I guess.

In my efforts to achieve balance within NMPCA, I am going to be contacting each of my fellow board members to find out more about their vision of the NMPCA and I want to talk to as many other members as possible. I'll be asking you things like: "How could being part of a group of people in any sense enhance your experience with clay?" "What would an ideal ceramic arts organization be like?" "What have you always wanted to do in the clay area but never had an opportunity to do?" "How would you like to engage with other members in the NMPCA?" "What can you contribute to make your vision come about?" Don't be surprised if I come up to you in the community or at an NMPCA event with these questions.

I have so many ideas I want to discuss with the members of the NMPCA that I am starting a blog for this purpose. For those luddites among us, a blog is a website where one or more people can write their ideas, show pictures, or expound on their ideas and then other people can respond with comments. Visit the blog at <http://nmpca.wordpress.com/>. I'll post this message there, too. Leave a comment on the blog site or send me a comment at jnm@nmpotters.org. And...don't go running away if you see me at an event!

Judy Nelson-Moore
WebMaster
(505)466-3070
New Mexico Potters and Clay Artists
www.nmpotters.org
www.claystudiotour.com
www.contemporaryclayfair.com

NMPCA Officers, Task Leaders and Board Members

Judith Nelson-Moore **President**
judy@nelsonmoore.com
505-466-3070

Michael Thornton **Vice President**
thesaurusstudio@aol.com
505-344-4644

Theresa Pesola **Secretary**
tapesola@unm.edu
505-842-0615

Cricket Appel – Treasurer
Cricketabq@gmail.com
505-922-1559

Layne Vickers-Smith **Membership Manager**
Santafepotter@comcast.net
505-983-7574

Lesley Mausolf **Email Editor**
sws@mountaincomm.us
575-437-6983

Teresa Tunick **Ghost Ranch Workshop**
tunick@swcp.com
505-986-8912

Christina Sullo **Slip Trail Editor**
christinasullo@live.com
505-803-1675

Barbara Campbell **Board Member**
bcampbell@valomet.com

Beverly Diamond **Board Member**
bed1@columbia.edu
505-424-9351

Linda Kastner **Board Member**
puppause@yahoo.com
505-989-9779

Kathe MacLaren **Board Member**
kathe1216@gmail.com
505-835-2406

Richard Mausolf **Board Member**
sws@mountaincomm.us
575-437-6983

Marilu Tejero **Board Member**
Marilu_ceramics@yahoo.com
505-463-6092

Annual Meeting of New Mexico Potters & Clay Artists

June 6, 2010 - Teresa Tunick's home in Santa Fe

Meeting called to order at 12:10 pm.

Present; Richard Mausolf, Michael Thornton, Cricket Appel, Tarry Pesola, Lesley Mausolf, Teresa Tunick, Judy Nelson-Moore, Phil Green, Barbara Campbell, Linda Kastner, Kathe MacLaren, Layne Vickers Smith, Jack Roberts, Penne Roberts, Christine Solo, Phyllis Shanti, Karin Bergh Hall, Evan Payne, Gloria Gilmore House, Cheryl Hoagland, Jim Romberg, Annette Romberg, Maia Sampson Michael, Lee Akins, Claire Lissance, Frank Willet, Beverly Diamond, Kari Rives, Cheryl Crownover, Liz Hunt, Kathryn Blackmun, Joe Bova (32)

Secretary's Report: Minutes for Annual Meeting (6/14/09) last year were approved.

Treasurer's Report: Approved

Old Business:

1. Bill Armstrong Grant: No applications were received this year. This year's funds are being used for two scholarships to Critical Santa Fe.
2. Ghost Ranch Workshop: September 10 - 12, 2010. New Mexico Connections. Sessions include fume firing, Pete Girard stamping with industrial foam, Liz Hunt, Sharbana Das Gupta. Space is still available. See our website.
3. Ghost Ranch Volunteer Camp: May's Volunteer Camp was very successful with 22 participants. Fume kiln was plastered, raku kiln rebuilt, shelves built and painted in raku area, extensive cleanup, old electric kiln dismantled and removed, materials used for other purposes. No new roof over work area yet. Future volunteer camps will be post by e-news and Slip Trail.
4. Slip Trail: Phil will retire from his shift as Slip Trail Editor this summer. He is willing to train the new Editor. If you are interested contact a Board member.
5. E-news. Lesley is still searching for the perfect server.
6. Election: The slate of new Board members is Judy Nelson-Moore, Beverly Diamond, Kathe MacLaren. Approved. Richard thanked members rotating off the Board: Phil Green, Barbara Seiler, and Kari Rives.

Regional Reports:

- SF Contemporary Clay Fair: Spring event was very successful. Donated \$150 to NMPCA to contribute to CPA's expenses.
- ABQ Empty Bowls: September 26, 2010 at Project Share (11am-2pm)
- ABQ Celebration Of Clay: Did not happen this year because location used previously (Albuquerque Arts Alliance) is unavailable and volunteers to coordinate (from the membership) are needed .

New Business:

- 1) Talk by Jim Romberg for Critical Santa Fe: October 27-29, 2010 at La Fonda. Hosted by NCECA. International participants (250 max). Scholarship applications are on NMPCA website. Tone of event will be art criticism as a means of communication and inspiration.
- 2) Talk by Joe Bova for International Academy of Ceramics (IAC): Discussed a proposal for the bi-annual meeting of IAC to be in Santa Fe for 2012. NMPCA will contribute a letter of support.

Meeting adjourned at 1:15pm.

Note: Before the meeting, a studio swap meet of member contributed tools, clay, glazes, books, etc. was done. Also magazines and materials from our library were contributed.

Note: After the meeting, a drawing was done to disperse the best of the books from the closure of the NMPCA library.

Tarry Pesola, Secretary

Discovery Corner – Mary Sharp Davis

Having to re-fire pieces because of pin holes in the glaze is such a pain. When they appear in a freshly glazed surface it is difficult to rub them out and still they may re-appear after firing. When applying glaze over a bisque pot (or greenware for that matter) I have found that lightly spraying the vessel with water first right before glaze application helps prevent pin holing of the freshly glazed pot. It works really well when applying glaze over bisque that has been freshly underglazed as well. I often work with textured surfaces and for this I not only first wet lightly the surface with my sprayer, but in addition I apply a first light coat of sprayed on glaze then I am assured the holes or deepest surfaces get filled in and covered. Then you may apply more spray (6 coats) or dip or paint as you will.

Here is a tip most seasoned potters already know but so many new ones do not have in their tool box yet. After applying handles, knobs or other protruding ornamentation if you cover the whole handle including ½ " onto the pot with wax resist, you will probably not have cracking ever again. It slows the drying process of the ornament. Also I use magic water in my slips when applying handles.

Mary Sharp-Davis

Classifieds

Studio Space for rent – East Mountains

Shared Studio Space Available
Pottery Classes Available
Between Sandia Park and Edgewood
Near Mountain Valley Road and Frost Road

Pottery studio, very open and clean, great views of the mountains, south facing windows for great light, nice quiet space. Not open to the public. Have your own key and access to equipment, 4 wheels, cone 10 electric with controller, Raku, lots of room. Space is also available for people wanting to teach. \$100.00 a month Call Irene @ 286-1145.

The classes available are for beginners and ongoing students, flexible schedule, reasonable prices, call 286-1145 and ask for Irene.

Studio Equipment for sale

I am closing my Santa Fe studio this month and have the following for sale.

- ◆ 34" x 34" x 34" interior front load digital w/welded iron frame (current retail \$8500.00) \$3000.00
- ◆ 18" x 18" x 28" top load electric blue diamond kiln 9 current retail \$2300.00) \$1200.00
- ◆ Brent slab roller, 36" x 42" slab bed (current retail \$2000.00) \$1000.00
- ◆ An extensive array of glazes (about 200 cases about \$6000.00)
- ◆ An assortment of metal shelving and carts and tables

George Alexander - 505-780-0968

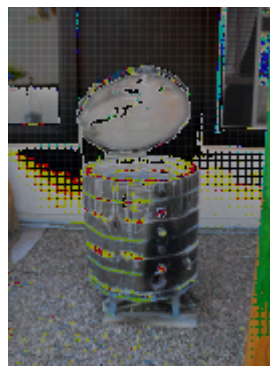
Potter's Wheel for sale

Pacifica Potter's Wheel, biggest model I think, New in Box \$700 - Marcia Stump, 505 819 8242

K28 #1 arch bricks wanted

We are looking for K28 #1 arch bricks and some straits, a couple of boxes of each. Does anyone have some for sale? Frank Willett, Santa Fe - frankluisa@msn.com
505 471 9070

Raku Kiln for sale



Used Skutt 1027 Electric kiln converted to a Raku kiln. Elements and kiln sitter have been removed and are available. It has been used for 2 years sparingly as a backup raku kiln. It is in Fair to good shape and works well. I can fire it from 0F-2000F in about 4-6 hours depending on the wind. It has a new lid and bottom, new bands, and many bricks have been replaced. Always covered when not in use. Reduces very well. Photos of recent work available on my website at www.cjspottery.com under Raku. Asking \$300. Must pick up as I recently had shoulder and neck surgery and I cannot pick it up. Photos available upon request. Available at my home in Bernalillo anytime. 505-771-8449

Contact Dr. Clifton E. Johnson, 951 Desert Willow Court, Bernalillo, NM 87004 505-771-8449.



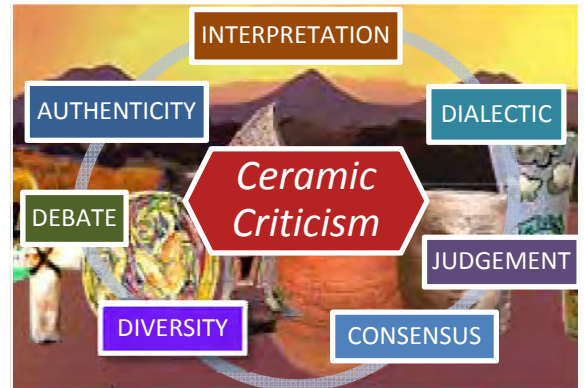
NMPCA Announcement Scholarships to NCECA Critical Santa Fe Symposium

The New Mexico Potters and Clay Artists invite members* to submit an application for a scholarship to the NCECA Critical Santa Fe symposium. This international symposium on developing criticism in ceramics will be held at the La Fonda Hotel in Santa Fe, NM on October 27-30, 2010.

The NCECA Critical Santa Fe will be a 3-day Symposium to examine current issues in art criticism and investigate ways to establish an effective and beneficial criticism in ceramics. Featured will be international speakers representing educators, galleries, artists and writers in a program of presentations, panels and discussion.

A sampling of issues:

- Exploration of a new critical consciousness
- Through the Looking Glass: Examining elements of interpretation.
- The Necessity of Judgment: The survival of art versus the fear of criticism.
- The Realities of Critical Theory: Criticism in contemporary culture: exhibition, publishing, and education.
- Material vs. Discourse: Does ceramics require a discipline-specific criticism?
- "Goodbye Greenberg!": A strategy to guarantee the future of criticism.
- The Necessity for Criticism in Contemporary Ceramics



Participants will include critics, educators, artists, gallery owners, writers, students, editors, collectors and patrons. For further description and list of presenters, see www.nceca.net.

This will be an opportunity to attend a unique event that will impact your perception of ceramic art, the development of your clay work and how you present your work and your teaching about clay to the world.

There will be two scholarships awarded: One for a full-time student, age 16-25, and one for any member. The award will cover symposium fees (a \$335-385 value). If needed, an NMPCA member in the Santa Fe area will provide lodging during the symposium. Attendees will be responsible for their own transportation to the event.

Rules and How to Apply

1. Applicants for the scholarships must be a member of the New Mexico Potters and Clay Artists. *
2. Applicants must live in the State of New Mexico or our neighboring states, Arizona, Texas, Colorado or Utah.
3. Each applicant applies by writing a letter addressed to NMPCA Critical Santa Fe Scholarships, c/o Judy Nelson-Moore, 23 Immanuel, Santa Fe, NM, 87508. Or, you can submit electronically through a well-prepared email to jnm@nmpotters.org. The contents of the letter/email should include:
 - a. Name, address, phone, email address
 - b. A brief bio of your work or interest in ceramics
 - c. Why do you want to attend the symposium?
 - d. How do you think attending the symposium will benefit you and others?
4. Recipients will be asked to write a brief article for the NMPCA newsletter, the Slip Trail, and/or present their experiences to other members at the next annual meeting in June, 2011.

Deadline: Submit your letter of application by September 1, 2010

Notification: A selection will be made based on the merits of the application letter by NCECA and NMPCA board members. Selected recipients will be notified by September 15.

**If you are not a member, join us! Membership is only \$25 a year or \$10 a year for students. See all member benefits and how to join on our website at www.nmpotters.org.*

Shows, Announcements, Classes, Workshops

Contemporary Clay Fair Call for Entries July 13

The call for entries for the Contemporary Clay Fair to be held Nov 20 and 21, 2010 at the Santa Fe Woman's club will be going out July 13, 2010. Be sure to check your NMPCA e-News or go to www.contemporaryclayfair.com for the entry forms. Applications must be posted on or before August 13, 2010.

Handmade Tiles Workshop

Susan Martin-Serra of Chromo, CO will be teaching her tile-making workshop entitled "Handmade Tiles: Images of the Southwest in Low Fire Earthenware" at the enchanting Ghost Ranch Retreat Center in Abiquiu, NM during early July. You can see Susan's artwork at www.belvedereceramicarts.com and sign-up for the workshop at www.ghost ranch.org.

In this workshop participants will enjoy making hand-carved and painted low-relief tile in the spirit of American Art Tile-Making. Make your own low-relief hand-carved tile with imagery derived from the beautiful landscapes of the Abiquiu/Santa Fe areas. For beginners or those with previous ceramics experience. Some drawing/painting experience helpful, but not required. Bring your own line-drawings or use Susan's drawings to create your design(s).

July 5 - 11, 2010 Ghost Ranch Abiquiu
Registration fee: \$385 (includes \$35 lab fee) + housing & meals

Susan Martin-Serra, Chromo, CO has an MFA in ceramics. Owner of Belvedere Ceramic Arts Ltd., Susan designs and produces unique handmade tile and ceramic artworks at her studio in Chromo. She specializes in imagery derived from her surroundings, creating beautiful tile murals, back splashes, sculptural art and water features.

Ghost Ranch Clay Workshops

Playing with Fire: Clay From Start to Finish

There is a certain intrigue that occurs when heat and smoke interact with the surface of earthenware. Beginning to advanced students will participate in the meditative process of working in clay and then enhancing their work in smoke and fire. We will be exploring the intimate connection associated with control and interplay of the elements
\$310.00 **Barbara Campbell** - July 5-11, 2010

Playing with Fire: Clay From Start to Finish

\$310.00 Barbara Campbell - July 19-25 2010

Art of The Sacred Vessel: An Exploration in Clay

This class will explore forms and symbols. Participants should bring personal stories, myths and totems for incorporation into their clay projects.

\$310.00 Campbell, Barbara - July 12-18 2010

For more information and to register, go to ghost ranch.org
Barbara Campbell - Stoneware Artifacts
becampbell33@gmail.com

Shows at Santa Fe Clay

Hicks & Sannit - July 9 – August 21, 2010

Opening Reception: Friday, July 9, 5:00 – 7:00 pm

Santa Fe Clay is pleased to present new work by David Hicks and Patricia Sannit in a two-person exhibit. This will be the first time that each of these artists is exhibiting at Santa Fe Clay. These artists are connected by material, but unique in their approach to the medium. They both are working in large scale, confronting the viewer with the power and impact of work that is architectural in nature.

David Hicks is concerned with agriculture and life cycles in nature. His "System Pieces" are large honeycomb terracotta structures that resemble the substructure or vascular systems of all organic life. His wall sculptures reference found objects from farm, barn or machinery.

Patricia Sannit's handbuilt pieces combine her interests in geology, archeology and history to create work that reflects her studies and travels in the Near East and Africa. Raw clay and patterned textures "explore the development and transmission of culture through time and across distance."

Badiali, Hicks, Sannit: Earth Origins - July 9 – August 21

Opening Reception: Friday, July 9, 5:00 – 7:00 pm

Santa Fe Clay is pleased to present new work by Darcy Badiali, David Hicks and Patricia Sannit in a three-person exhibit entitled Earth Origins. This will be the first time that each of these artists is exhibiting at Santa Fe Clay. The artists are connected by material, but unique in their approach to the medium. All three are working in large scale, confronting the viewer with the power and impact of work that is architectural in nature.

Darcy Badiali creates wheel thrown vessels that are monumental in scale. His extraordinary large vessels may have their origins in function, but have transcended pottery and confront the viewer in sculptural space.

David Hicks is concerned with agriculture and life cycles in nature. His "System Pieces" are large honeycomb terracotta structures that resemble the substructure or vascular systems of all organic life. His wall sculptures reference found objects from farm, barn or machinery.

Patricia Sannit's handbuilt pieces combine her interests in geology, archeology and history to create work that reflects her studies and travels in the Near East and Africa. Raw clay and patterned textures "explore the development and transmission of culture through time and across distance."

Info: Amy Slater, sfc@santafeclay.com



5900 South Santa Fe Dr.
PO Box 9002
Littleton, CO 80160-9002

MEDIA ADVISORY

For Immediate Release: Feb., 1, 2010

Contact: Courtney Loehfelm, Executive Director, ACC Foundation
Phone: 303.797.5914
E-mail: courtney.loehfelm@arapahoe.edu

Save the Date: **Chalk Art Festival Comes to ACC**

WHAT: The Arapahoe Community College Foundation is planning the first chalk art festival in the South Metropolitan Denver area. Called Chalk it Up to Education, the festival will be Saturday, Sept. 11, at ACC.

WHERE: Arapahoe Community College Main Campus
5900 S. Santa Fe Drive
Littleton, CO, 80160

WHEN: **Saturday, Sept. 11, 2010, 9 a.m. to 7 p.m.**

WHO: Professional artists will create works of art with chalk. Food vendors will be available and sponsorship opportunities will be created. The event will be open to students, staff and faculty members of Arapahoe Community College and the general public. **K-12 teachers and students are especially encouraged to participate. There will be no cost for materials and there will be awards at all age levels. The ACC Foundation website will have sample lesson plans. You can find the website through www.arapahoe.edu.**

We will have more information available about procedures in March. If you have any questions call 303-797-5881.

BACKGROUND: The ACC Foundation is working with ACC's art department faculty to attract professional artists to the event and to involve ACC students and K through 12 students in the area. The event will include booth vendors and artists selling their works. A VIP party for sponsors is planned for Friday night, Sept. 10. Further information will be released as it becomes available.

-30-

Arapahoe Community College has served the south Denver metropolitan area since 1965. One of 13 colleges in the Colorado Community College System, ACC offers more than 100 degree and certificate programs to its 7,500 plus credit students per semester through sites in downtown Littleton and Parker. ACC also offers professional development, customized training and other non-credit offerings enjoyed by many more lifelong learners.

Arapahoe Community College Mission Statement:

To provide innovative and responsive educational and economic opportunities in an accessible, inclusive environment that promotes success for students, employees and the community.



COLORADO COMMUNITY
COLLEGE SYSTEM



Chalk It Up To Education: Chalk Art Festival
Saturday, September 11 – 9 a.m. – 7 p.m.

Handmade Fine Art Booth

Dear Handmade Fine Art Vendor,

Please join us for the *Chalk It Up To Education: Chalk Art Festival* held Saturday, September 11 from 9:00 a.m. – 7:00 p.m. The event will be held at Arapahoe Community College on the West Lawn and is a fundraiser for the Arapahoe Community College Foundation. This event expects to bring together over 4,000 people for the one-day event and promises to build into one of the finest events in South Denver!

The event will include 4 amazing Colorado Chalk Artists who have built pieces for places like La Piazza, the Belmar Italian Festival, and the Winter Park Arts Festival plus at least 25 other artists from around the Denver Metro Area and 10 student artists from the college. In addition, there will be an entertainment stage all day, food vendors, business vendors, and more.

We invite you to apply for a Fine Art/Handmade Artist Booth at this exciting event. Booth spaces are a single 10' x 10' space; additional space is available per the instructions on the "Terms and Conditions" section of this application. Applications will be juried by art educators at Arapahoe Community College and by community leaders.

The **application deadline is August 1, 2010**, but the best spaces will be given out on a first come first served basis with the first applications getting some of the best spaces, so apply early! If you know of someone else who should be applying to this festival, please give them a copy of your application or they can download it at the webpage: <http://www.chalkituptoeducation.com>. For questions regarding booths please call Sara at (303) 907-4452.

Sincerely,

Steven Stokes and Sara Crowe
Events Etc., Chalk It Up To Education Contractors



Chalk It Up To Education: Chalk Art Festival
Saturday, September 11 – 9 a.m. – 7 p.m.

Handmade Fine Art Booth

Organization: _____

Contact Name: _____

Address: _____

City, State, Zip: _____

Phone: _____ E-mail: _____

Enclosed fees: _____ \$150 Handmade Fine Artist Booth
_____ \$75 Non-profit Booth

Optional: _____ \$75 Electricity (within 100 feet of your booth)

Total Amount: \$ _____ Please make checks payable to:
Arapahoe Community College Foundation.
Payment must be included with application to confirm your space.

Taxes: _____ A current Littleton Sales Tax number is required if you are selling products from your booth. Please indicate here your current status:
* We have a sales tax number and it is: _____
* We don't have a sales tax number at this time: _____

Please check your style of art:

- | | |
|---|--------------------------------------|
| _____ Painting, pencil, watercolor, or charcoal | _____ Pottery |
| _____ Glass | _____ Sculpture: Metal, bronze, wood |
| _____ Photography | _____ Jewelry |
| _____ Woodworking | _____ Silversmith |
| _____ Other (please describe): _____ | |

If you are paying for electricity, how do you plan to use the electricity on site? Please be specific, as we will use this to determine generator orders.

Please include three photos with your application – one of the booth space and two of the items that you wish to sell. You may also e-mail the photos to sara@eventguy.biz with the subject line: HANDMADE ART ENTRY ACCF.

Please read and sign the **Terms and Conditions** section located on the reverse of this application. Mail applications to Sara Crowe, Events Etc - ACCF at 21575 Longs Peak Lane, Parker, CO 80138. Please make checks payable to "Arapahoe Community College Foundation". For questions call Sara at (303) 907-4452 or Courtney at (303) 797-5914.

HANDMADE FINE ART APPLICATION

Page 2 of 2 - Terms and Conditions

1. Sales Tax collection (city and state) is the responsibility of the vendor and must be paid. State Special Event Licenses and the remittance of state taxes are your sole responsibility. Follow-up information will be provided for approved vendors.
2. Set-up will begin at 6:00 AM on Saturday, September 11 with the festival hours 9:00 AM – 7:00 PM.
3. Each vendor must provide his/her own attractive, covered, weighted outdoor booth. All booths **MUST** be free standing and weighted. Be prepared for the unpredictable Colorado weather ahead of time!
4. The Arapahoe Community College Foundation (ACCF) and Arapahoe Community College are not responsible for any lost, damaged or stolen items.
5. Booths must be managed by one adult (18 or older) at all times and must be open for the **entire event**.
6. ACCF, reserves the right to restrict the number of booths selling similar products. ACCF has the right to refuse items of questionable taste.
7. Additional booth space is available for the rate of \$75 per additional booth space.
8. **Application deadline is August 1, 2010.** Accepted booths will be notified within one month of turning in their application. Refunds of half your booth fee will be given until August 21, after that date refunds are not possible. Refunds will not be given for inclement weather.
9. All items for sale by craft vendors must be hand crafted. If your item is not hand crafted please purchase a commercial booth space. ACCF will jury all handmade art booth applications for quality and to confirm that art is hand made and is not resell.
10. A receipt will be generated and a confirmation letter will be sent within four weeks of the receipt of your application. Ten days prior to the event you will receive a final packet with all necessary materials for the day including site map and parking, parking passes, final load-in times, etc.
11. Personal generators will not be allowed. If you need electricity at your booth please pay the additional \$75 charge and power will be drawn to within 100 feet of your booth (please bring appropriate length power cords to cover the 100 feet).
12. No pets are allowed. NO exceptions.
13. Exhibitor signature required below:

All exhibitors agree to abide by all policies; procedures, guidelines, fee schedules and operations related to the Arapahoe Community College Foundation Chalk It Up To Education (Event) as determined and Arapahoe Community College Foundation (ACCF) and the Arapahoe Community College Foundation Chalk It Up To Education Committee (CIUTE Committee). Neither ACCF, Events Etc, nor the CIUTE committee is responsible for any loss or damage. Vendor hereby indemnifies and agrees to hold harmless ACCF, Events Etc, and the CIUTE Committee, their officers, members, staff and agents; the and the owners of any related property of the festival against all claims, liabilities, damages and expenses (including expenses of litigation and attorney's fees) asserted against or incurred by vendor arising in whole or in part out of vendor activities hereunder. Vendor agrees that ACCF, Events Etc, and CIUTE Committee may revoke immediately all of the rights of the vendor, his/her agents, his/her employees to exhibit space at Arapahoe Community College Foundation for violation of any policy, rule of procedure, or for sale of any item not previously approved by ACCF, Events Etc, or the CIUTE Committee. ACCF, Events Etc, and the CIUTE Committee reserve the right to assign vendors booths in accordance with the best interests of the event, including but not limited to limiting number of booths selling similar items and right to refuse items of questionable taste.

Signature: _____ Date: _____

Please read and sign the **Terms and Conditions** section located on the reverse of this application. Mail applications to Sara Crowe, Events Etc - ACCF at 21575 Longs Peak Lane, Parker, CO 80138. Please make checks payable to "Arapahoe Community College Foundation". For questions call Sara at (303) 907-4452 or Courtney at (303) 797-5914.



Please check out my new website featuring my pottery, kilns, classes, workshops and my blog.

Be sure to become a fan on facebook, follow my blog or join my newsletter to hear about kiln openings, workshops, shows, etc.

Thanks for all the support!!!

www.loganwannamaker.com

***New Mexico Potters & Clay Artists Board Meeting
June 6, 2010 - Teresa Tunick's home after Annual Mtg***

Present: Richard Mausolf, Michael Thornton, Cricket Appel, Tarry Pesola, Teresa Tunick, Linda Kastner, Barbara Campbell, Lesley Mausolf, Layne Vickers Smith,NEW: Judy Nelson-Moore, Beverly Diamond, Kathe MacLaren (12)

Secretary's Report: Minutes for April 27, 2010 Board Meeting were approved.
Minutes for May 11, 2010 Board Meeting had been approved via email.

Election of Officers: Approved.

President: Judy Nelson-Moore

Vice Pres: Michael Thornton

Treasurer: Cricket Appel

Secretary: Tarry Pesola

WebSite: Judy will retire as WebMaster this summer. She has things very organized for her replacement. We discussed the idea of some job responsibilities being shared by more than one person. Teamwork? Ghost Ranch? Slip Trail quarterly? B. Campbell has volunteered to replace Teresa as coordinator for G.R. Workshop after this year's event. We need someone to step up as WebMaster! E-news once a week?

President's goal: To have meetings be more fun and "closer" to clay. So Judy volunteered to be the first one to give a 10 min presentation about a clay technique at our next in-person meeting.

Handouts: Tarry handed out an updated "Job Description" and a list of NMPCA activities, especially for new Board members.

"Compensation" for Board members with critical jobs: Many differing comments. A committee was formed to gather opinions and make a proposal to the Board. Volunteers- Cricket A., Tarry P., Layne V-S.

Treasurer's Report: The tax "990 form" has been filed for 2009.

Next Meeting: Sunday, July 18, 2010, noon, Linda Kastner's.
Tarry Pesola, Secretary

***New Mexico Potters and Clay Artists
PO Box 26811 Albuquerque, NM
87125***

Presorted STD
US Postage
PAID
Albuquerque, NM
Permit No. 1893